

## Goat Anti-Mouse IgG Heavy & Light Chain antibody {HRP} (STJ99665)

STJ99665

### GENERAL INFORMATION

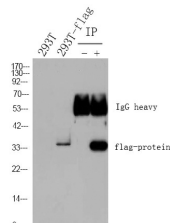
<b>Product Type</b>	Secondary antibodies
<b>Short Description</b>	HRP-conjugated goat polyclonal anti-Mouse IgG Heavy & Light Chain secondary antibody. For use in most research applications.
<b>Applications</b>	WB/IHC/ELISA
<b>Host/Source</b>	Goat
<b>Reactivity</b>	Mouse

### PRODUCT PROPERTIES

<b>Clonality</b>	Polyclonal
<b>Clone ID</b>	
<b>Concentration</b>	4 mg/mL
<b>Conjugation</b>	HRP
<b>Purification</b>	The antibody was affinity-purified from goat antiserum by affinity-chromatography using epitope-specific immunogen.
<b>Dilution Range</b>	WB 1:5000-20000 IHC-P 1:20-100 ELISA 1:5000-20000
<b>Formulation</b>	Liquid in PBS containing 50% Glycerol, 0.5% BSA and 0.02% Sodium Azide.
<b>Isotype</b>	IgG
<b>Storage Instruction</b>	Store at -20°C for up to 1 year from the date of receipt, and avoid repeat freeze-thaw cycles.

### TARGET INFORMATION

**Gene ID**  
**Gene Symbol**  
**Uniprot ID**  
**Immunogen**  
**Immunogen Region**  
**Specificity**  
**Immunogen**  
**Sequence**



1) Input: 293T transfected N-flag protein lysate 2) IP product: IP dilute 1: 200, 293T transfected N-flag protein lysate  
 Western blot analysis: primary antibody: 1:10000 Secondary antibody: Goat anti- mouse IgG (STJ99665), 1: 5000

This product is suitable for in-vitro studies under the RESEARCH USE ONLY [RUO] licence. This product must not be used as for diagnostic or other medical purposes.  
 St John's Laboratory Ltd, Knowledge Dock Business Centre, University Way, London, E16 2RD | Tel: 0208 223 3081