

Anti-Cleaved-F2R-Ser42 antibody (STJ99660)

STJ99660

GENERAL INFORMATION

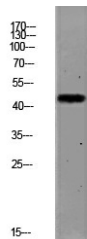
Product Type	Primary antibodies
Short Description	Rabbit polyclonal antibody anti-Cleaved-Proteinase-activated receptor 1-Ser42 is suitable for use in Western Blot and ELISA research applications.
Applications	WB/ELISA
Host/Source	Rabbit
Reactivity	Human/Mouse/Rat

PRODUCT PROPERTIES

Clonality	Polyclonal
Clone ID	
Concentration	1 mg/mL
Conjugation	Unconjugated
Purification	The antibody was affinity-purified from rabbit antiserum by affinity-chromatography using epitope-specific immunogen.
Dilution Range	WB 1:500-2000 ELISA 1:10000-20000
Formulation	Liquid in PBS containing 50% Glycerol, 0.5% BSA and 0.02% Sodium Azide.
Isotype	IgG
Storage	Store at -20°C for up to 1 year from the date of receipt, and avoid repeat freeze-thaw cycles.
Instruction	

TARGET INFORMATION

Gene ID	2149
Gene Symbol	F2R
Uniprot ID	PAR1_HUMAN
Immunogen	Synthesized peptide derived from the human PAR1 (Cleaved-Ser42) Polyclonal
Immunogen Region	
Specificity	This antibody detects endogenous levels of PAR1 (Cleaved-Ser42).
Immunogen Sequence	



Western blot analysis of MCF-7 lysate, antibody was diluted at 1000. Secondary antibody (STJ99666) was diluted at 1:20000

This product is suitable for in-vitro studies under the RESEARCH USE ONLY [RUO] licence. This product must not be used as for diagnostic or other medical purposes.
St John's Laboratory Ltd, Knowledge Dock Business Centre, University Way, London, E16 2RD | Tel: 0208 223 3081