

Anti-C8A antibody (201-250 aa) (STJ99337)

STJ99337

GENERAL INFORMATION

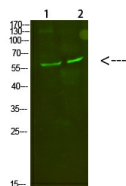
Product Type	Primary antibodies
Short Description	Rabbit polyclonal antibody anti-Complement component C8 alpha chain (201-250 aa) is suitable for use in Western Blot and ELISA research applications.
Applications	WB/ELISA
Host/Source	Rabbit
Reactivity	Human/Rat/Mouse

PRODUCT PROPERTIES

Clonality	Polyclonal
Clone ID	
Concentration	1 mg/mL
Conjugation	Unconjugated
Purification	The antibody was affinity-purified from rabbit antiserum by affinity-chromatography using epitope-specific immunogen.
Dilution Range	WB 1:500-2000 ELISA 1:10000-20000
Formulation	Liquid in PBS containing 50% Glycerol, 0.5% BSA and 0.02% Sodium Azide.
Isotype	IgG
Storage	Store at -20°C for up to 1 year from the date of receipt, and avoid repeat freeze-thaw cycles.
Instruction	

TARGET INFORMATION

Gene ID	731
Gene Symbol	C8A
Uniprot ID	CO8A_HUMAN
Immunogen	Synthesized peptide derived from the human C8 Alpha at the amino acid range 201-250
Immunogen Region	201-250 aa
Specificity	C8 Alpha Polyclonal Antibody detects endogenous levels of C8 Alpha
Immunogen Sequence	



Western blot analysis of 1, mouse-kidney 2, mouse-heart cells using primary antibody diluted at 1:500 (4°C overnight). Secondary antibody (Goat Anti-rabbit IgG IRDye 800 (diluted at 1:5000, 25°C, 1 hour)

This product is suitable for in-vitro studies under the RESEARCH USE ONLY [RUO] licence. This product must not be used as for diagnostic or other medical purposes.
St John's Laboratory Ltd, Knowledge Dock Business Centre, University Way, London, E16 2RD | Tel: 0208 223 3081