

Anti-ITGB7 antibody (671-720 aa) (STJ99322)

STJ99322

GENERAL INFORMATION

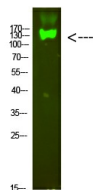
Product Type	Primary antibodies
Short Description	Rabbit polyclonal antibody anti-Integrin beta-7 (671-720 aa) is suitable for use in Western Blot, ELISA and Immunohistochemistry research applications.
Applications	WB/ELISA/IHC
Host/Source	Rabbit
Reactivity	Human/Mouse

PRODUCT PROPERTIES

Clonality	Polyclonal
Clone ID	
Concentration	1 mg/mL
Conjugation	Unconjugated
Purification	The antibody was affinity-purified from rabbit antiserum by affinity-chromatography using epitope-specific immunogen.
Dilution Range	WB 1:500-2000 IHC-P 1:50-300 ELISA 2000-20000
Formulation	Liquid in PBS containing 50% Glycerol, 0.5% BSA and 0.02% Sodium Azide.
Isotype	IgG
Storage Instruction	Store at -20°C for up to 1 year from the date of receipt, and avoid repeat freeze-thaw cycles.

TARGET INFORMATION

Gene ID	3695
Gene Symbol	ITGB7
Uniprot ID	ITB7_HUMAN
Immunogen	Synthesized peptide derived from the human Integrin Beta 7 at the amino acid range 671-720
Immunogen Region	671-720 aa
Specificity	Integrin Beta 7 Polyclonal Antibody detects endogenous levels of Integrin Beta 7
Immunogen Sequence	



Western blot analysis of mouse-heart cells using primary antibody diluted at 1:1000 (4A°C overnight). Secondary antibody 1/4 Goat Anti-rabbit IgG IRDye 800 (diluted at 1:5000, 25A°C, 1 hour)