

Anti-ATP6AP1 antibody (421-470 aa) (STJ99321)

STJ99321

GENERAL INFORMATION

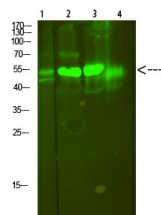
Product Type	Primary antibodies
Short Description	Rabbit polyclonal antibody anti-V-type proton ATPase subunit S1 (421-470 aa) is suitable for use in Western Blot and ELISA research applications.
Applications	WB/ELISA
Host/Source	Rabbit
Reactivity	Human/Mouse/Rat

PRODUCT PROPERTIES

Clonality	Polyclonal
Clone ID	
Concentration	1 mg/mL
Conjugation	Unconjugated
Purification	The antibody was affinity-purified from rabbit antiserum by affinity-chromatography using epitope-specific immunogen.
Dilution Range	WB 1:500-2000 ELISA 1:10000-20000
Formulation	Liquid in PBS containing 50% Glycerol, 0.5% BSA and 0.02% Sodium Azide.
Isotype	IgG
Storage Instruction	Store at -20°C for up to 1 year from the date of receipt, and avoid repeat freeze-thaw cycles.

TARGET INFORMATION

Gene ID	537
Gene Symbol	ATP6AP1
Uniprot ID	VAS1_HUMAN
Immunogen	Synthesized peptide derived from the human V-ATPase S1 at the amino acid range 421-470
Immunogen	421-470 aa
Region	
Specificity	V-ATPase S1 Polyclonal Antibody detects endogenous levels of V-ATPase S1
Immunogen	
Sequence	



Western blot analysis of 1, mouse-lung 2, mouse-brain 3, mouse-spleen 4, mouse-kidney cells using primary antibody diluted at 1:500 (4A°C overnight). Secondary antibody 1/5 Goat Anti-rabbit IgG IRDye 800 (diluted at 1:5000, 25A°C, 1 hour)

This product is suitable for in-vitro studies under the RESEARCH USE ONLY [RUO] licence. This product must not be used as for diagnostic or other medical purposes.
St John's Laboratory Ltd, Knowledge Dock Business Centre, University Way, London, E16 2RD | Tel: 0208 223 3081