

Anti-MAP2K6 antibody [8A11-G11-G11] (STJ99282)

STJ99282

GENERAL INFORMATION

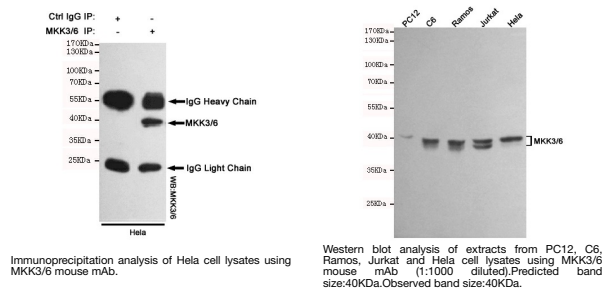
Product Type	Primary antibodies
Short Description	Mouse monoclonal antibody anti-Dual specificity mitogen-activated protein kinase kinase 6 is suitable for use in Western Blot and Immunoprecipitation research applications.
Applications	WB/IP
Host/Source	Mouse
Reactivity	Human/Rat

PRODUCT PROPERTIES

Clonality	Monoclonal
Clone ID	8A11-G11-G11
Concentration	1 mg/mL
Conjugation	Unconjugated
Purification	The antibody was affinity-purified from mouse ascites by affinity-chromatography using epitope-specific immunogen.
Dilution Range	WB 1:1000
Formulation	Liquid in PBS containing 50% Glycerol, 0.5% BSA and 0.02% Sodium Azide.
Isotype	IgG1
Storage	Store at -20°C for up to 1 year from the date of receipt, and avoid repeat freeze-thaw cycles.
Instruction	

TARGET INFORMATION

Gene ID	5608
Gene Symbol	MAP2K6
Uniprot ID	MP2K6_HUMAN
Immunogen	Purified recombinant human MKK6 protein fragments expressed in E.coli.
Immunogen Region	
Specificity	This antibody detects endogenous levels of MKK3 and MKK6 and does not cross-react with related proteins.
Immunogen Sequence	



This product is suitable for in-vitro studies under the RESEARCH USE ONLY [RUO] licence. This product must not be used as for diagnostic or other medical purposes.
St John's Laboratory Ltd, Knowledge Dock Business Centre, University Way, London, E16 2RD | Tel: 0208 223 3081