

## Anti-ANXA1 antibody [5E4-D8-F12] (STJ99256)

STJ99256

### GENERAL INFORMATION

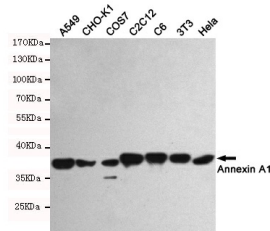
|                          |  |
|--------------------------|--|
| <b>Product Type</b>      | Primary antibodies   |
| <b>Short Description</b> | Mouse monoclonal antibody anti-Annexin A1 is suitable for use in Western Blot research applications. |
| <b>Applications</b>      | WB   |
| <b>Host/Source</b>       | Mouse  |
| <b>Reactivity</b>        | Human/Mouse/Rat/Monkey   |

### PRODUCT PROPERTIES

|                            |  |
|----------------------------|--|
| <b>Clonality</b>           | Monoclonal   |
| <b>Clone ID</b>            | 5E4-D8-F12   |
| <b>Concentration</b>       | 1 mg/mL  |
| <b>Conjugation</b>         | Unconjugated   |
| <b>Purification</b>        | The antibody was affinity-purified from mouse ascites by affinity-chromatography using epitope-specific immunogen. |
| <b>Dilution Range</b>      | WB 1:1000  |
| <b>Formulation</b>         | Liquid in PBS containing 50% Glycerol, 0.5% BSA and 0.02% Sodium Azide.  |
| <b>Isotype</b>             | IgG1   |
| <b>Storage Instruction</b> | Store at -20°C for up to 1 year from the date of receipt, and avoid repeat freeze-thaw cycles.                     |

### TARGET INFORMATION

|                           |   |
|---------------------------|---|
| <b>Gene ID</b>            | 301   |
| <b>Gene Symbol</b>        | ANXA1   |
| <b>Uniprot ID</b>         | ANXA1_HUMAN   |
| <b>Immunogen</b>          | Purified recombinant human Annexin A1 beta protein fragments expressed in E.coli.                     |
| <b>Immunogen Region</b>   |   |
| <b>Specificity</b>        | This antibody detects endogenous levels of Annexin A1 and does not cross-react with related proteins. |
| <b>Immunogen Sequence</b> |   |



Western blot detection of Annexin A1 in A549, CHO-K1, COS7, C2C12, C6, 3T3 and HeLa cell lysates using Annexin A1 mouse mAb (1:1000 diluted). Predicted band size: 38kDa. Observed band size: 38kDa.

This product is suitable for in-vitro studies under the RESEARCH USE ONLY [RUO] licence. This product must not be used as for diagnostic or other medical purposes.  
St John's Laboratory Ltd, Knowledge Dock Business Centre, University Way, London, E16 2RD | Tel: 0208 223 3081