

## Anti-BECN1 antibody [4F4-B10-C9] (STJ99148)

STJ99148

### GENERAL INFORMATION

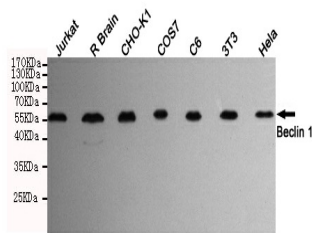
|                          |  |
|--------------------------|--|
| <b>Product Type</b>      | Primary antibodies   |
| <b>Short Description</b> | Mouse monoclonal antibody anti-Beclin-1 is suitable for use in Western Blot and Immunoprecipitation research applications. |
| <b>Applications</b>      | WB/IP  |
| <b>Host/Source</b>       | Mouse  |
| <b>Reactivity</b>        | Human/Mouse/Rat/Monkey/Hamster   |

### PRODUCT PROPERTIES

|                            |  |
|----------------------------|--|
| <b>Clonality</b>           | Monoclonal   |
| <b>Clone ID</b>            | 4F4-B10-C9   |
| <b>Concentration</b>       | 1 mg/mL  |
| <b>Conjugation</b>         | Unconjugated   |
| <b>Purification</b>        | The antibody was affinity-purified from mouse ascites by affinity-chromatography using epitope-specific immunogen. |
| <b>Dilution Range</b>      | WB 1:1000<br>IP 1:50-200   |
| <b>Formulation</b>         | Liquid in PBS containing 50% Glycerol, 0.5% BSA and 0.02% Sodium Azide.  |
| <b>Isotype</b>             | IgG1   |
| <b>Storage Instruction</b> | Store at -20°C for up to 1 year from the date of receipt, and avoid repeat freeze-thaw cycles.                     |

### TARGET INFORMATION

|                           |   |
|---------------------------|---|
| <b>Gene ID</b>            | 8678  |
| <b>Gene Symbol</b>        | BECN1   |
| <b>Uniprot ID</b>         | BECN1_HUMAN   |
| <b>Immunogen</b>          | Purified recombinant human Beclin 1 protein fragments expressed in E.coli.                          |
| <b>Immunogen Region</b>   |   |
| <b>Specificity</b>        | This antibody detects endogenous levels of Beclin 1 and does not cross-react with related proteins. |
| <b>Immunogen Sequence</b> |   |



Western blot detection of Beclin 1 in HeLa, 3T3, C6, COS7, CHO-K1, Rat brain and Jurkat cell lysates using Beclin 1 mouse mAb (1:1000 diluted). Predicted band size: 52KDa. Observed band size: 55KDa.

This product is suitable for in-vitro studies under the RESEARCH USE ONLY [RUO] licence. This product must not be used as for diagnostic or other medical purposes.  
St John's Laboratory Ltd, Knowledge Dock Business Centre, University Way, London, E16 2RD | Tel: 0208 223 3081