

Anti-PPP2CB antibody [2G2-H6-G11-E8] (STJ99088)

STJ99088

GENERAL INFORMATION

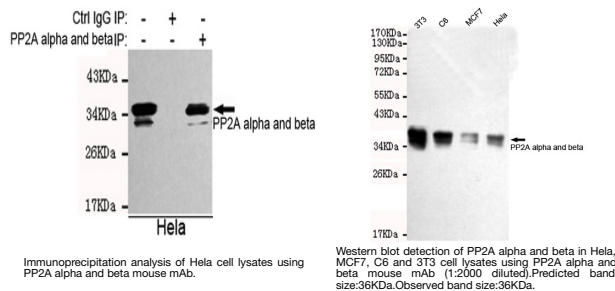
Product Type	Primary antibodies
Short Description	Mouse monoclonal antibody anti-Serine/threonine-protein phosphatase 2A catalytic subunit beta isoform is suitable for use in Western Blot and Immunoprecipitation research applications.
Applications	WB/IP
Host/Source	Mouse
Reactivity	Human/Mouse/Rat

PRODUCT PROPERTIES

Clonality	Monoclonal
Clone ID	2G2-H6-G11-E8
Concentration	1 mg/mL
Conjugation	Unconjugated
Purification	The antibody was affinity-purified from mouse ascites by affinity-chromatography using epitope-specific immunogen.
Dilution Range	WB 1:2000
Formulation	Liquid in PBS containing 50% Glycerol, 0.5% BSA and 0.02% Sodium Azide.
Isotype	IgG2a
Storage Instruction	Store at -20°C for up to 1 year from the date of receipt, and avoid repeat freeze-thaw cycles.

TARGET INFORMATION

Gene ID	5516
Gene Symbol	PPP2CB
Uniprot ID	PP2AB_HUMAN
Immunogen	Purified recombinant human full length PP2A beta protein expressed in E.coli
Immunogen Region	
Specificity	This antibody detects endogenous levels of PP2A alpha and PP2A beta.
Immunogen Sequence	



This product is suitable for in-vitro studies under the RESEARCH USE ONLY [RUO] licence. This product must not be used as for diagnostic or other medical purposes.
St John's Laboratory Ltd, Knowledge Dock Business Centre, University Way, London, E16 2RD | Tel: 0208 223 3081