

# Anti-EPCAM antibody [1D5-B6-B10] (STJ99064)

STJ99064

## GENERAL INFORMATION

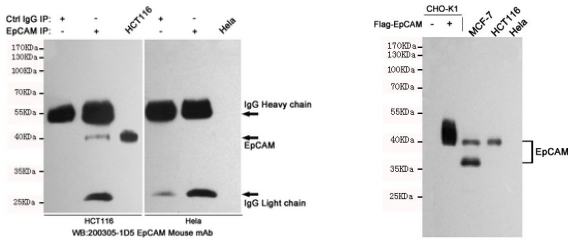
<b>Product Type</b>	Primary antibodies
<b>Short Description</b>	Mouse monoclonal antibody anti-Epithelial cell adhesion molecule is suitable for use in Western Blot and Immunoprecipitation research applications.
<b>Applications</b>	WB/IP
<b>Host/Source</b>	Mouse
<b>Reactivity</b>	Human

## PRODUCT PROPERTIES

<b>Clonality</b>	Monoclonal
<b>Clone ID</b>	1D5-B6-B10
<b>Concentration</b>	1 mg/mL
<b>Conjugation</b>	Unconjugated
<b>Purification</b>	The antibody was affinity-purified from mouse ascites by affinity-chromatography using epitope-specific immunogen.
<b>Dilution Range</b>	WB 1:1000
<b>Formulation</b>	Liquid in PBS containing 50% Glycerol, 0.5% BSA and 0.02% Sodium Azide.
<b>Isotype</b>	IgG1
<b>Storage</b>	Store at -20°C for up to 1 year from the date of receipt, and avoid repeat freeze-thaw cycles.
<b>Instruction</b>	

## TARGET INFORMATION

<b>Gene ID</b>	4072
<b>Gene Symbol</b>	EPCAM
<b>Uniprot ID</b>	EPCAM_HUMAN
<b>Immunogen</b>	Purified recombinant EpCAM protein fragments expressed in E.coli.
<b>Immunogen Region</b>	
<b>Specificity</b>	This antibody detects endogenous levels of EpCAM and does not cross-react with related proteins.
<b>Immunogen Sequence</b>	



Immunoprecipitation analysis of HCT116 and HeLa cell lysates using EpCAM.

Western blot analysis of extracts from CHO-K1, CHO-K1 transfected by Flag-EpCAM, MCF7 (EpCAM positive), HCT116 (EpCAM positive) and HeLa (EpCAM negative) cell lysates using EpCAM mouse mAb (1:1000 diluted). Predicted band size: 39kDa. Observed band size: 39/35kDa.

This product is suitable for in-vitro studies under the RESEARCH USE ONLY [RUO] licence. This product must not be used as for diagnostic or other medical purposes.  
St John's Laboratory Ltd, Knowledge Dock Business Centre, University Way, London, E16 2RD | Tel: 0208 223 3081