

## Anti-KLF4 antibody [3B3-B11-E6] (STJ99041)

STJ99041

### GENERAL INFORMATION

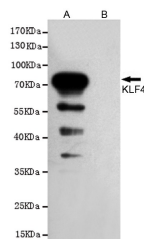
<b>Product Type</b>	Primary antibodies
<b>Short Description</b>	Mouse monoclonal antibody anti-Krueppel-like factor 4 is suitable for use in Western Blot research applications.
<b>Applications</b>	WB
<b>Host/Source</b>	Mouse
<b>Reactivity</b>	Mouse

### PRODUCT PROPERTIES

<b>Clonality</b>	Monoclonal
<b>Clone ID</b>	3B3-B11-E6
<b>Concentration</b>	1 mg/mL
<b>Conjugation</b>	Unconjugated
<b>Purification</b>	The antibody was affinity-purified from mouse ascites by affinity-chromatography using epitope-specific immunogen.
<b>Dilution Range</b>	WB 1:1000
<b>Formulation</b>	Liquid in PBS containing 50% Glycerol, 0.5% BSA and 0.02% Sodium Azide.
<b>Isotype</b>	IgG2b
<b>Storage Instruction</b>	Store at -20°C for up to 1 year from the date of receipt, and avoid repeat freeze-thaw cycles.

### TARGET INFORMATION

<b>Gene ID</b>	9314
<b>Gene Symbol</b>	KLF4
<b>Uniprot ID</b>	KLF4_HUMAN
<b>Immunogen</b>	Purified recombinant mouse KLF4 protein fragments expressed in E.coli.
<b>Immunogen Region</b>	
<b>Specificity</b>	Transfected Only.
<b>Immunogen Sequence</b>	



Western blot analysis of extracts from CHO-K1 cells, transfected with pcDNA3.1-Hygro (+)-mKLF4-Flag construct (A) or transfected with pcDNA3.1-Hygro (+)-Flag vector (B), using KLF4 mouse mAb (1:1000 diluted). Predicted band size: 55/65 kDa. Observed band size: 55/65 kDa.

This product is suitable for in-vitro studies under the RESEARCH USE ONLY [RUO] licence. This product must not be used as for diagnostic or other medical purposes.  
St John's Laboratory Ltd, Knowledge Dock Business Centre, University Way, London, E16 2RD | Tel: 0208 223 3081