

Anti-CD52 antibody (20-50 aa) (STJ98992)

STJ98992

GENERAL INFORMATION

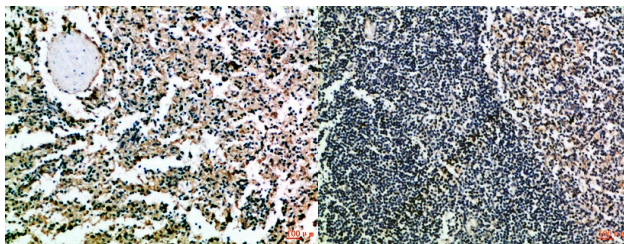
| | |
|--------------------------|---|
| Product Type | Primary antibodies |
| Short Description | Rabbit polyclonal antibody anti-CAMPATH-1 antigen (20-50 aa) is suitable for use in Immunohistochemistry, Immunofluorescence and ELISA research applications. |
| Applications | IHC/IF/ELISA |
| Host/Source | Rabbit |
| Reactivity | Human/Rat/Mouse |

PRODUCT PROPERTIES

| | |
|----------------------------|---|
| Clonality | Polyclonal |
| Clone ID | |
| Concentration | 1 mg/mL |
| Conjugation | Unconjugated |
| Purification | The antibody was affinity-purified from rabbit antiserum by affinity-chromatography using epitope-specific immunogen. |
| Dilution Range | IHC-P 1:50-200 ELISA 1:10000-20000 IF 1:50-200 |
| Formulation | Liquid in PBS containing 50% Glycerol, 0.5% BSA and 0.02% Sodium Azide. |
| Isotype | IgG |
| Storage Instruction | Store at -20°C for up to 1 year from the date of receipt, and avoid repeat freeze-thaw cycles. |

TARGET INFORMATION

| | |
|---------------------------|--|
| Gene ID | 1043 |
| Gene Symbol | CD52 |
| Uniprot ID | CD52_HUMAN |
| Immunogen | Synthetic peptide from the human protein at the amino acid range 20-50 |
| Immunogen Region | 20-50 aa |
| Specificity | The antibody detects endogenous CD52 |
| Immunogen Sequence | |



Immunohistochemical analysis of paraffin-embedded Human-spleen, antibody was diluted at 1:100

Immunohistochemical analysis of paraffin-embedded Human-tonsil, antibody was diluted at 1:100