

Anti-PTH1R antibody (46-122 aa) (STJ98966)

STJ98966

GENERAL INFORMATION

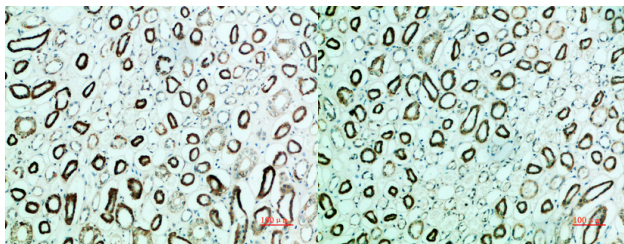
Product Type	Primary antibodies
Short Description	Rabbit polyclonal antibody anti-Parathyroid hormone/parathyroid hormone-related peptide receptor (46-122 aa) is suitable for use in Western Blot, Immunohistochemistry, Immunofluorescence and ELISA research applications.
Applications	WB/IHC/IF/ELISA
Host/Source	Rabbit
Reactivity	Human/Rat/Mouse

PRODUCT PROPERTIES

Clonality	Polyclonal
Clone ID	
Concentration	1 mg/mL
Conjugation	Unconjugated
Purification	The antibody was affinity-purified from rabbit antiserum by affinity-chromatography using epitope-specific immunogen.
Dilution	WB 1:500-2000
Range	IHC-P 1:500-200 ELISA 1:10000-20000 IF 1:50-200
Formulation	Liquid in PBS containing 50% Glycerol, 0.5% BSA and 0.02% Sodium Azide.
Isotype	IgG
Storage	Store at -20°C for up to 1 year from the date of receipt, and avoid repeat freeze-thaw cycles.
Instruction	

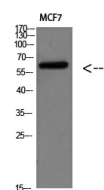
TARGET INFORMATION

Gene ID	5745
Gene Symbol	PTH1R
Uniprot ID	PTH1R_HUMAN
Immunogen	Synthetic peptide from the human protein at the amino acid range 46-122
Immunogen	46-122 aa
Region	
Specificity	The antibody detects endogenous Parathyroid hormone/parathyroid hormone-related peptide receptor
Immunogen	
Sequence	



Immunohistochemical analysis of paraffin-embedded human-kidney, antibody was diluted at 1:200

Immunohistochemical analysis of paraffin-embedded human-kidney, antibody was diluted at 1:200



Western blot analysis of MCF7 Cell Lysate, antibody was diluted at 1:1000. Secondary antibody was diluted at 1:20000