

Anti-DCT antibody (232-304 aa) (STJ98957)

STJ98957

GENERAL INFORMATION

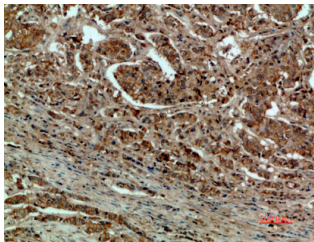
Product Type	Primary antibodies
Short Description	Rabbit polyclonal antibody anti-L-dopachrome tautomerase (232-304 aa) is suitable for use in Western Blot, Immunohistochemistry, Immunofluorescence and ELISA research applications.
Applications	WB/IHC/IF/ELISA
Host/Source	Rabbit
Reactivity	Human/Rat/Mouse

PRODUCT PROPERTIES

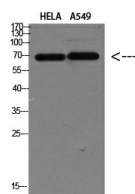
Clonality	Polyclonal
Clone ID	
Concentration	1 mg/mL
Conjugation	Unconjugated
Purification	The antibody was affinity-purified from rabbit antiserum by affinity-chromatography using epitope-specific immunogen.
Dilution Range	WB 1:500-2000 IHC-P 1:500-200 ELISA 1:10000-20000 IF 1:50-200
Formulation	Liquid in PBS containing 50% Glycerol, 0.5% BSA and 0.02% Sodium Azide.
Isotype	IgG
Storage Instruction	Store at -20°C for up to 1 year from the date of receipt, and avoid repeat freeze-thaw cycles.

TARGET INFORMATION

Gene ID	1638
Gene Symbol	DCT
Uniprot ID	TYRP2_HUMAN
Immunogen	Synthetic peptide from the human protein at the amino acid range 232-304
Immunogen Region	232-304 aa
Specificity	The antibody detects endogenous DCT
Immunogen Sequence	



Immunohistochemical analysis of paraffin-embedded human-breast-cancer, antibody was diluted at 1:200



Western blot analysis of HELA A549 Cell Lysate, antibody was diluted at 1:1000. Secondary antibody was diluted at 1:20000