

## Anti-SLC6A1 antibody (170-220 aa) (STJ98949)

STJ98949

### GENERAL INFORMATION

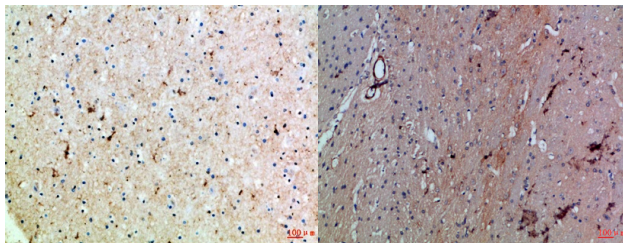
<b>Product Type</b>	Primary antibodies
<b>Short Description</b>	Rabbit polyclonal antibody anti-Sodium-and chloride-dependent GABA transporter 1 (170-220 aa) is suitable for use in Western Blot, Immunohistochemistry, Immunofluorescence and ELISA research applications.
<b>Applications</b>	WB/IHC/IF/ELISA
<b>Host/Source</b>	Rabbit
<b>Reactivity</b>	Human/Mouse/Rat

### PRODUCT PROPERTIES

<b>Clonality</b>	Polyclonal
<b>Clone ID</b>	
<b>Concentration</b>	1 mg/mL
<b>Conjugation</b>	Unconjugated
<b>Purification</b>	The antibody was affinity-purified from rabbit antiserum by affinity-chromatography using epitope-specific immunogen.
<b>Dilution</b>	WB 1:500-2000
<b>Range</b>	IHC-P 1:500-200 ELISA 1:10000-20000 IF 1:50-200
<b>Formulation</b>	Liquid in PBS containing 50% Glycerol, 0.5% BSA and 0.02% Sodium Azide.
<b>Isotype</b>	IgG
<b>Storage</b>	Store at -20°C for up to 1 year from the date of receipt, and avoid repeat freeze-thaw cycles.
<b>Instruction</b>	

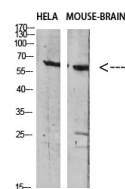
### TARGET INFORMATION

<b>Gene ID</b>	6529
<b>Gene Symbol</b>	SLC6A1
<b>Uniprot ID</b>	SC6A1_HUMAN
<b>Immunogen</b>	The antiserum was produced against synthesized peptide derived from the Internal region of human SLC6A1 at the amino acid range 170-220
<b>Immunogen Region</b>	170-220 aa
<b>Specificity</b>	The antibody detects endogenous GABA T-1
<b>Immunogen Sequence</b>	



Immunohistochemical analysis of paraffin-embedded Human-brain, antibody was diluted at 1:100

Immunohistochemical analysis of paraffin-embedded Rat-brain, antibody was diluted at 1:100



Western blot analysis of HELA/mouse brain Cell Lysate using antibody. Secondary antibody was diluted at 1:20000

This product is suitable for in-vitro studies under the RESEARCH USE ONLY [RUO] licence. This product must not be used as for diagnostic or other medical purposes.  
St John's Laboratory Ltd, Knowledge Dock Business Centre, University Way, London, E16 2RD | Tel: 0208 223 3081