

Anti-ATG5 antibody (STJ98903)

STJ98903

GENERAL INFORMATION

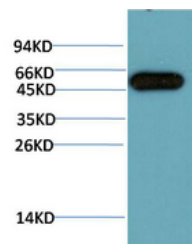
Product Type	Primary antibodies
Short Description	Mouse monoclonal antibody anti-Autophagy protein 5 is suitable for use in Immunofluorescence, Western Blot, Immunohistochemistry and Immunoprecipitation research applications.
Applications	IF/WB/IHC/IP
Host/Source	Mouse
Reactivity	Human/Mouse/Rat

PRODUCT PROPERTIES

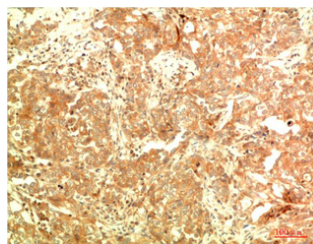
Clonality	Monoclonal
Clone ID	
Concentration	1 mg/mL
Conjugation	Unconjugated
Purification	The antibody was affinity-purified from mouse antiserum by affinity-chromatography using epitope-specific immunogen.
Dilution Range	IF 1:50-200 IP 1:50-200 WB 1:500-2000 IHC-P 1:50-300
Formulation	Liquid in PBS containing 50% Glycerol, 0.5% BSA and 0.02% Sodium Azide.
Isotype	
Storage Instruction	Store at -20°C for up to 1 year from the date of receipt, and avoid repeat freeze-thaw cycles.

TARGET INFORMATION

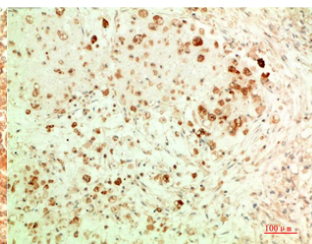
Gene ID	9474
Gene Symbol	ATG5
Uniprot ID	ATG5_HUMAN
Immunogen	Recombinant Protein of ATG5
Immunogen Region	
Specificity	The antibody detects endogenous ATG5 protein
Immunogen Sequence	



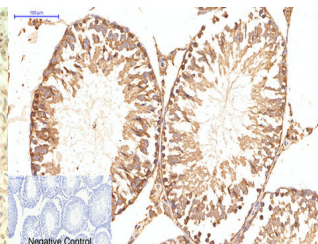
Western blot analysis of Hela Cell Lysate using ATG5 Mouse mAb diluted at 1:10000



Immunohistochemical analysis of paraffin-embedded Human Breast Carcinoma Tissue using ATG5 Mouse mAb diluted at 1:200.



Immunohistochemical analysis of paraffin-embedded Human Ovarian Carcinoma Tissue using ATG5 Mouse mAb diluted at 1:200.



Immunohistochemical analysis of paraffin-embedded Rat-testis tissue. 1, ATG5 Mouse monoclonal antibody (3C7) was diluted at 1:200 (4A°C, overnight). 2, Sodium citrate pH 6.0 was used for antibody retrieval (>98A°C, 20min). 3, Secondary antibody was diluted at 1:200 (room temperature, 30min). Negative control was used by secondary antibody only.

This product is suitable for in-vitro studies under the RESEARCH USE ONLY [RUO] licence. This product must not be used as for diagnostic or other medical purposes.
St John's Laboratory Ltd, Knowledge Dock Business Centre, University Way, London, E16 2RD | Tel: 0208 223 3081