

Anti-CBX5 antibody (STJ98895)

STJ98895

GENERAL INFORMATION

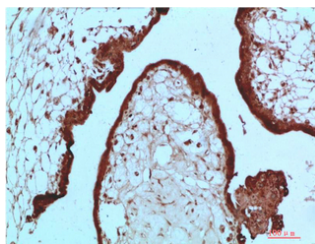
Product Type	Primary antibodies
Short Description	Mouse monoclonal antibody anti-Chromobox protein homolog 5 is suitable for use in Immunofluorescence, Western Blot and Immunohistochemistry research applications.
Applications	IF/WB/IHC
Host/Source	Mouse
Reactivity	Human/Mouse/Rat

PRODUCT PROPERTIES

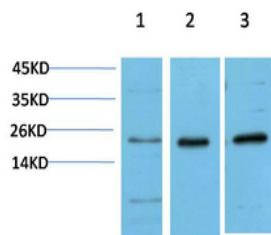
Clonality	Monoclonal
Clone ID	
Concentration	1 mg/mL
Conjugation	Unconjugated
Purification	The antibody was affinity-purified from mouse antiserum by affinity-chromatography using epitope-specific immunogen.
Dilution Range	IF 1:50-200 WB 1:500-2000 IHC-P 1:50-300
Formulation	Liquid in PBS containing 50% Glycerol, 0.5% BSA and 0.02% Sodium Azide.
Isotype	
Storage	Store at -20°C for up to 1 year from the date of receipt, and avoid repeat freeze-thaw cycles.
Instruction	

TARGET INFORMATION

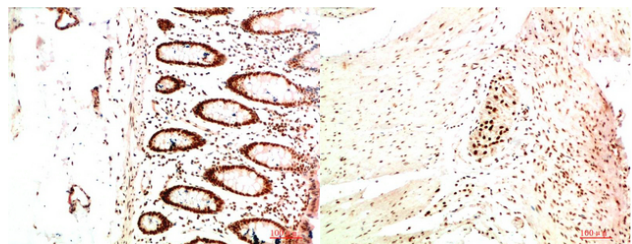
Gene ID	23468
Gene Symbol	CBX5
Uniprot ID	CBX5_HUMAN
Immunogen	Recombinant Protein of HP-1 Alpha
Immunogen Region	
Specificity	The antibody detects endogenous HP-1 Alpha protein
Immunogen Sequence	



Immunohistochemical analysis of paraffin-embedded Human Placenta Tissue using HP-1 Alpha Mouse mAb diluted at 1:200



Western blot analysis of 1) HeLa Cell Lysate, 2) 3T3 Cell Lysate, 3) PC12 Cell Lysate using HP-1 Gamma Alpha Mouse mAb diluted at 1:1000.



Immunohistochemical analysis of paraffin-embedded Human Colon Carcinoma Tissue using HP-1 Alpha Mouse mAb diluted at 1:200

Immunohistochemical analysis of paraffin-embedded Human Colon Carcinoma Tissue using HP-1 Alpha Mouse mAb diluted at 1:200

This product is suitable for in-vitro studies under the RESEARCH USE ONLY [RUO] licence. This product must not be used as for diagnostic or other medical purposes.
St John's Laboratory Ltd, Knowledge Dock Business Centre, University Way, London, E16 2RD | Tel: 0208 223 3081