

## Anti-RXRG antibody (380-420 aa) (STJ98860)

STJ98860

### GENERAL INFORMATION

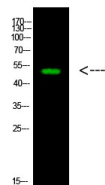
<b>Product Type</b>	Primary antibodies
<b>Short Description</b>	Rabbit polyclonal antibody anti-Retinoic acid receptor RXR-gamma (380-420 aa) is suitable for use in Western Blot and ELISA research applications.
<b>Applications</b>	WB/ELISA
<b>Host/Source</b>	Rabbit
<b>Reactivity</b>	Human/Rat/Mouse

### PRODUCT PROPERTIES

<b>Clonality</b>	Polyclonal
<b>Clone ID</b>	
<b>Concentration</b>	1 mg/mL
<b>Conjugation</b>	Unconjugated
<b>Purification</b>	The antibody was affinity-purified from rabbit antiserum by affinity-chromatography using epitope-specific immunogen.
<b>Dilution Range</b>	WB 1:500-2000 ELISA 1:10000-20000
<b>Formulation</b>	Liquid in PBS containing 50% Glycerol, 0.5% BSA and 0.02% Sodium Azide.
<b>Isotype</b>	IgG
<b>Storage</b>	Store at -20°C for up to 1 year from the date of receipt, and avoid repeat freeze-thaw cycles.
<b>Instruction</b>	

### TARGET INFORMATION

<b>Gene ID</b>	<a href="#">6258</a>
<b>Gene Symbol</b>	<a href="#">RXRG</a>
<b>Uniprot ID</b>	<a href="#">RXRG_HUMAN</a>
<b>Immunogen</b>	Synthesized peptide derived from the human LWS at the amino acid range 380-420
<b>Immunogen Region</b>	380-420 aa
<b>Specificity</b>	This antibody detects endogenous levels of LWS
<b>Immunogen Sequence</b>	



Western blot analysis of 1, mouse-heart cells using primary antibody diluted at 1:1000 (4A°C overnight). Secondary antibody: (Goat Anti-rabbit IgG iRDye 800 (diluted at 1:5000, 25A°C, 1 hour) cells nucleus extracted by Minute TM Cytoplasmic and Nuclear Fractionation kit (SC-003, Inventibiotec, MN, USA).