

Anti-KCTD7 antibody (181-230 aa) (STJ98856)

STJ98856

GENERAL INFORMATION

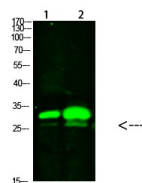
Product Type	Primary antibodies
Short Description	Rabbit polyclonal antibody anti-BTB/POZ domain-containing protein KCTD7 (181-230 aa) is suitable for use in Western Blot, ELISA and Immunohistochemistry research applications.
Applications	WB/ELISA/IHC
Host/Source	Rabbit
Reactivity	Human/Mouse/Rat

PRODUCT PROPERTIES

Clonality	Polyclonal
Clone ID	
Concentration	1 mg/mL
Conjugation	Unconjugated
Purification	The antibody was affinity-purified from rabbit antiserum by affinity-chromatography using epitope-specific immunogen.
Dilution Range	WB 1:500-2000 IHC-P 1:50-300 ELISA 2000-20000
Formulation	Liquid in PBS containing 50% Glycerol, 0.5% BSA and 0.02% Sodium Azide.
Isotype	IgG
Storage Instruction	Store at -20°C for up to 1 year from the date of receipt, and avoid repeat freeze-thaw cycles.

TARGET INFORMATION

Gene ID	154881
Gene Symbol	KCTD7
Uniprot ID	KCTD7_HUMAN
Immunogen	Synthesized peptide derived from the human KCTD7 at the amino acid range 181-230
Immunogen Region	181-230 aa
Specificity	This antibody detects endogenous levels of KCTD7
Immunogen Sequence	



Western blot analysis of 1, mouse-brain 2, mouse-spleen cells using primary antibody diluted at 1:1000 (4Å°C overnight). Secondary antibody/Goat Anti-rabbit IgG IRDye 800 (diluted at 1:5000, 25Å°C, 1 hour)