

Anti-NUTM1 antibody (1082-1131 aa) (STJ98851)

STJ98851

GENERAL INFORMATION

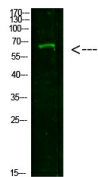
Product Type	Primary antibodies
Short Description	Rabbit polyclonal antibody anti-NUT family member 1 (1082-1131 aa) is suitable for use in Western Blot and ELISA research applications.
Applications	WB/ELISA
Host/Source	Rabbit
Reactivity	Human/Rat/Mouse

PRODUCT PROPERTIES

Clonality	Polyclonal
Clone ID	
Concentration	1 mg/mL
Conjugation	Unconjugated
Purification	The antibody was affinity-purified from rabbit antiserum by affinity-chromatography using epitope-specific immunogen.
Dilution Range	WB 1:500-2000 ELISA 1:10000-20000
Formulation	Liquid in PBS containing 50% Glycerol, 0.5% BSA and 0.02% Sodium Azide.
Isotype	IgG
Storage Instruction	Store at -20°C for up to 1 year from the date of receipt, and avoid repeat freeze-thaw cycles.

TARGET INFORMATION

Gene ID	256646
Gene Symbol	NUTM1
Uniprot ID	NUTM1_HUMAN
Immunogen	Synthesized peptide derived from the human NUT at the amino acid range 1082-1131
Immunogen Region	1082-1131 aa
Specificity	This antibody detects endogenous levels of NUT
Immunogen Sequence	



Western blot analysis of 293T cells using primary antibody diluted at 1:1000 (4A°C overnight). Secondary antibody (Goat Anti-rabbit IgG IRDye 800) diluted at 1:5000, 25A°C, 1 hour

This product is suitable for in-vitro studies under the RESEARCH USE ONLY [RUO] licence. This product must not be used as for diagnostic or other medical purposes.
St John's Laboratory Ltd, Knowledge Dock Business Centre, University Way, London, E16 2RD | Tel: 0208 223 3081