

## Anti-Acetyl-RB1-K873/K874 antibody (STJ98847)

STJ98847

### GENERAL INFORMATION

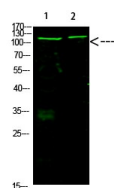
<b>Product Type</b>	Primary antibodies
<b>Short Description</b>	Rabbit polyclonal antibody anti-Acetyl-Retinoblastoma-associated protein-K873/K874 is suitable for use in Western Blot and Immunohistochemistry research applications.
<b>Applications</b>	WB/IHC
<b>Host/Source</b>	Rabbit
<b>Reactivity</b>	Human/Mouse/Rat

### PRODUCT PROPERTIES

<b>Clonality</b>	Polyclonal
<b>Clone ID</b>	
<b>Concentration</b>	1 mg/mL
<b>Conjugation</b>	Unconjugated
<b>Purification</b>	The antibody was affinity-purified from rabbit antiserum by affinity-chromatography using epitope-specific immunogen.
<b>Dilution Range</b>	WB 1:500-2000 IHC-P 1:50-300
<b>Formulation</b>	Liquid in PBS containing 50% Glycerol, 0.5% BSA and 0.02% Sodium Azide.
<b>Isotype</b>	IgG
<b>Storage</b>	Store at -20°C for up to 1 year from the date of receipt, and avoid repeat freeze-thaw cycles.
<b>Instruction</b>	

### TARGET INFORMATION

<b>Gene ID</b>	5925
<b>Gene Symbol</b>	RB1
<b>Uniprot ID</b>	RB_HUMAN
<b>Immunogen</b>	Synthesized Acetyl peptide derived from the human Rb. at the amino acid range K873/872
<b>Immunogen Region</b>	
<b>Specificity</b>	This antibody detects endogenous levels of Rb at Human:K873+K874;Mouse:K866+K867;Rat:K865+K866, It doesn't react with total protein.
<b>Immunogen Sequence</b>	



Western blot analysis of 1, mouse-heart 3, mouse-brain cells using primary antibody diluted at 1:1000 (4A°C overnight). Secondary antibody (Goat Anti-rabbit IgG IRDye 800 (diluted at 1:5000, 25A°C, 1 hour)

This product is suitable for in-vitro studies under the RESEARCH USE ONLY [RUO] licence. This product must not be used as for diagnostic or other medical purposes.  
St John's Laboratory Ltd, Knowledge Dock Business Centre, University Way, London, E16 2RD | Tel: 0208 223 3081