

Anti-Acetyl-PARP1-K521 antibody (STJ98846)

STJ98846

GENERAL INFORMATION

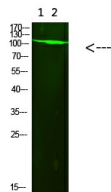
Product Type	Primary antibodies
Short Description	Rabbit polyclonal antibody anti-Acetyl-Poly polymerase 1 ADP-ribosyltransferase 1 polymerase 1, processed C-terminus; Poly polymerase 1, processed N-terminus-K521 is suitable for use in Western Blot and ELISA research applications.
Applications	WB/ELISA
Host/Source	Rabbit
Reactivity	Human/Mouse/Rat

PRODUCT PROPERTIES

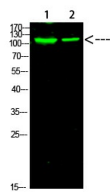
Clonality	Polyclonal
Clone ID	
Concentration	1 mg/mL
Conjugation	Unconjugated
Purification	The antibody was affinity-purified from rabbit antiserum by affinity-chromatography using epitope-specific immunogen.
Dilution Range	WB 1:1000
Formulation	Liquid in PBS containing 50% Glycerol, 0.5% BSA and 0.02% Sodium Azide.
Isotype	IgG
Storage Instruction	Store at -20°C for up to 1 year from the date of receipt, and avoid repeat freeze-thaw cycles.

TARGET INFORMATION

Gene ID	142
Gene Symbol	PARP1
Uniprot ID	PARP1_HUMAN
Immunogen	Synthesized Acetyl peptide derived from the human PARP-1. at the amino acid range K521
Immunogen Region	
Specificity	This antibody detects endogenous levels of PARP-1 at Human:K521;Mouse:K520;Rat:K521, It doesn't react with total protein.
Immunogen Sequence	



Western blot analysis of 1, 293t 2, mouse-brain cells using primary antibody diluted at 1:1000 (4A°C overnight). Secondary antibody: Goat Anti-rabbit IgG IRDye 800 (diluted at 1:5000, 25A°C, 1 hour)



Western blot analysis of 1, mouse-heart 2, mouse-brain cells using primary antibody diluted at 1:1000 (4A°C overnight). Secondary antibody: Goat Anti-rabbit IgG IRDye 800 (diluted at 1:5000, 25A°C, 1 hour)

This product is suitable for in-vitro studies under the RESEARCH USE ONLY [RUO] licence. This product must not be used as for diagnostic or other medical purposes.
St John's Laboratory Ltd, Knowledge Dock Business Centre, University Way, London, E16 2RD | Tel: 0208 223 3081