

Anti-Acetyl-ACSS1-K642 antibody (STJ98836)

STJ98836

GENERAL INFORMATION

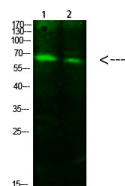
Product Type	Primary antibodies
Short Description	Rabbit polyclonal antibody anti-Acetyl-Acetyl-coenzyme A synthetase 2-like, mitochondrial-K642 is suitable for use in Western Blot and ELISA research applications.
Applications	WB/ELISA
Host/Source	Rabbit
Reactivity	Human/Mouse/Rat

PRODUCT PROPERTIES

Clonality	Polyclonal
Clone ID	
Concentration	1 mg/mL
Conjugation	Unconjugated
Purification	The antibody was affinity-purified from rabbit antiserum by affinity-chromatography using epitope-specific immunogen.
Dilution Range	WB 1:500-1:2000 ELISA 1:20000
Formulation	Liquid in PBS containing 50% Glycerol, 0.5% BSA and 0.02% Sodium Azide.
Isotype	IgG
Storage	Store at -20°C for up to 1 year from the date of receipt, and avoid repeat freeze-thaw cycles.
Instruction	

TARGET INFORMATION

Gene ID	84532
Gene Symbol	ACSS1
Uniprot ID	ACS2L_HUMAN
Immunogen	Synthesized Acetyl peptide derived from the human ACSS1. at the amino acid range K642
Immunogen Region	
Specificity	This antibody detects endogenous levels of ACSS1 at Human:K642;Mouse:K635;Rat:K635, It doesn't react with total protein.
Immunogen Sequence	



Western blot analysis of 1, 293T 2, hela cells using primary antibody diluted at 1:1000 (4°C overnight). Secondary antibody: (Goat Anti-rabbit IgG IRDye 800 (diluted at 1:5000, 25°C, 1 hour))

This product is suitable for in-vitro studies under the RESEARCH USE ONLY [RUO] licence. This product must not be used as for diagnostic or other medical purposes.
St John's Laboratory Ltd, Knowledge Dock Business Centre, University Way, London, E16 2RD | Tel: 0208 223 3081