

Anti-IL1RL1 antibody (251-300 aa) (STJ98813)

STJ98813

GENERAL INFORMATION

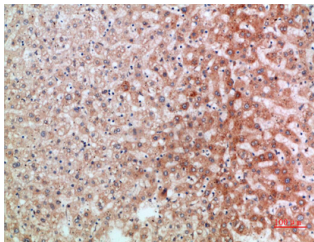
Product Type	Primary antibodies
Short Description	Rabbit polyclonal antibody anti-Interleukin-1 receptor-like 1 (251-300 aa) is suitable for use in Western Blot, Immunohistochemistry, Immunofluorescence and ELISA research applications.
Applications	WB/IHC/IF/ELISA
Host/Source	Rabbit
Reactivity	Human/Rat/Mouse

PRODUCT PROPERTIES

Clonality	Polyclonal
Clone ID	
Concentration	1 mg/mL
Conjugation	Unconjugated
Purification	The antibody was affinity-purified from rabbit antiserum by affinity-chromatography using epitope-specific immunogen.
Dilution Range	WB 1:500-1:2000 IHC 1:100-1:300 IF 1:200-1:1000 ELISA 1:20000
Formulation	Liquid in PBS containing 50% Glycerol, 0.5% BSA and 0.02% Sodium Azide.
Isotype	IgG
Storage Instruction	Store at -20°C for up to 1 year from the date of receipt, and avoid repeat freeze-thaw cycles.

TARGET INFORMATION

Gene ID	9173
Gene Symbol	IL1RL1
Uniprot ID	ILRL1_HUMAN
Immunogen	Synthetic peptide from the human protein at the amino acid range 251-300
Immunogen Region	251-300 aa
Specificity	The antibody detects endogenous ST2
Immunogen Sequence	



Immunohistochemical analysis of paraffin-embedded human liver, antibody was diluted at 1:200