

Anti-IL27 antibody (1-50 aa) (STJ98795)

STJ98795

GENERAL INFORMATION

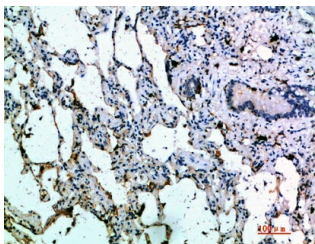
Product Type	Primary antibodies
Short Description	Rabbit polyclonal antibody anti-Interleukin-27 subunit alpha (1-50 aa) is suitable for use in Immunohistochemistry, Immunofluorescence and ELISA research applications.
Applications	IHC/IF/ELISA
Host/Source	Rabbit
Reactivity	Human/Mouse/Rat

PRODUCT PROPERTIES

Clonality	Polyclonal
Clone ID	
Concentration	1 mg/mL
Conjugation	Unconjugated
Purification	The antibody was affinity-purified from rabbit antiserum by affinity-chromatography using epitope-specific immunogen.
Dilution Range	IHC-P 1:50-200 ELISA 1:10000-20000 IF 1:50-200
Formulation	Liquid in PBS containing 50% Glycerol, 0.5% BSA and 0.02% Sodium Azide.
Isotype	IgG
Storage Instruction	Store at -20°C for up to 1 year from the date of receipt, and avoid repeat freeze-thaw cycles.

TARGET INFORMATION

Gene ID	246778
Gene Symbol	IL27
Uniprot ID	IL27A_HUMAN
Immunogen	Synthetic peptide from the human protein at the amino acid range 1-50
Immunogen Region	1-50 aa
Specificity	The antibody detects endogenous IL-27A
Immunogen Sequence	



Immunohistochemical analysis of paraffin-embedded human-lung, antibody was diluted at 1:200

This product is suitable for in-vitro studies under the RESEARCH USE ONLY [RUO] licence. This product must not be used as for diagnostic or other medical purposes.
St John's Laboratory Ltd, Knowledge Dock Business Centre, University Way, London, E16 2RD | Tel: 0208 223 3081