

Anti-CD16 antibody (100-150 aa) (STJ98738)

STJ98738

GENERAL INFORMATION

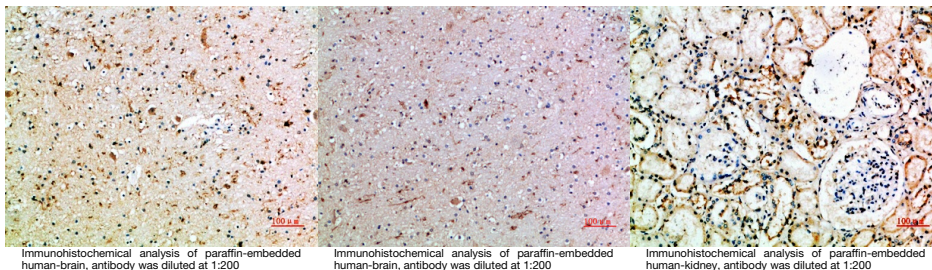
Product Type	Primary antibodies
Short Description	Rabbit polyclonal antibody anti-Low affinity immunoglobulin gamma Fc region receptor III-A and Low affinity immunoglobulin gamma Fc region receptor III-B (100-150 aa) is suitable for use in Immunohistochemistry, Immunofluorescence and ELISA research
Applications	IHC/IF/ELISA
Host/Source	Rabbit
Reactivity	Human/Rat/Mouse

PRODUCT PROPERTIES

Clonality	Polyclonal
Clone ID	
Concentration	1 mg/mL
Conjugation	Unconjugated
Purification	The antibody was affinity-purified from rabbit antiserum by affinity-chromatography using epitope-specific immunogen.
Dilution	IHC-P 1:50-200
Range	ELISA 1:10000-20000 IF 1:50-200
Formulation	Liquid in PBS containing 50% Glycerol, 0.5% BSA and 0.02% Sodium Azide.
Isotype	IgG
Storage Instruction	Store at -20°C for up to 1 year from the date of receipt, and avoid repeat freeze-thaw cycles.

TARGET INFORMATION

Gene ID	2215 2214
Gene Symbol	FCGR3B FCGR3A
Uniprot ID	FCG3B_HUMAN FCG3A_HUMAN
Immunogen	Synthetic peptide from the human protein at the amino acid range 100-150
Immunogen Region	100-150 aa
Specificity	The antibody detects endogenous CD16
Immunogen Sequence	



This product is suitable for in-vitro studies under the RESEARCH USE ONLY [RUO] licence. This product must not be used as for diagnostic or other medical purposes.
St John's Laboratory Ltd, Knowledge Dock Business Centre, University Way, London, E16 2RD | Tel: 0208 223 3081