

## Anti-DSG1 antibody (30-90 aa) (STJ98723)

STJ98723

### GENERAL INFORMATION

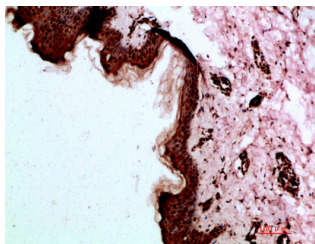
<b>Product Type</b>	Primary antibodies
<b>Short Description</b>	Rabbit polyclonal antibody anti-Desmoglein-1 (30-90 aa) is suitable for use in Western Blot, Immunohistochemistry, Immunofluorescence and ELISA research applications.
<b>Applications</b>	WB/IHC/IF/ELISA
<b>Host/Source</b>	Rabbit
<b>Reactivity</b>	Human/Mouse/Rat

### PRODUCT PROPERTIES

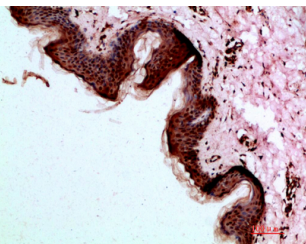
<b>Clonality</b>	Polyclonal
<b>Clone ID</b>	
<b>Concentration</b>	1 mg/mL
<b>Conjugation</b>	Unconjugated
<b>Purification</b>	The antibody was affinity-purified from rabbit antiserum by affinity-chromatography using epitope-specific immunogen.
<b>Dilution Range</b>	WB 1:500-2000 IHC-P 1:500-200 ELISA 1:10000-20000 IF 1:50-200
<b>Formulation</b>	Liquid in PBS containing 50% Glycerol, 0.5% BSA and 0.02% Sodium Azide.
<b>Isotype</b>	IgG
<b>Storage</b>	Store at -20°C for up to 1 year from the date of receipt, and avoid repeat freeze-thaw cycles.
<b>Instruction</b>	

### TARGET INFORMATION

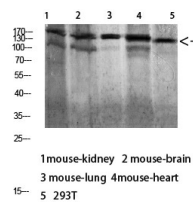
<b>Gene ID</b>	1828
<b>Gene Symbol</b>	DSG1
<b>Uniprot ID</b>	DSG1_HUMAN
<b>Immunogen</b>	Synthetic peptide from the human protein at the amino acid range 30-90
<b>Immunogen</b>	30-90 aa
<b>Region</b>	
<b>Specificity</b>	The antibody detects endogenous Dsg1
<b>Immunogen</b>	
<b>Sequence</b>	



Immunohistochemical analysis of paraffin-embedded human skin, antibody was diluted at 1:200



Immunohistochemical analysis of paraffin-embedded human skin, antibody was diluted at 1:200



Western blot analysis of 293T lysate, antibody was diluted at 1000. Secondary antibody was diluted at 1:20000