

Anti-ASIC1 antibody (220-280 aa) (STJ98706)

STJ98706

GENERAL INFORMATION

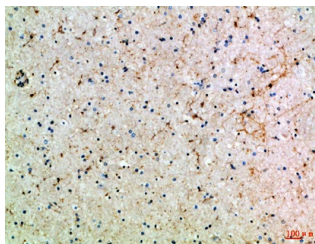
Product Type	Primary antibodies
Short Description	Rabbit polyclonal antibody anti-Acid-sensing ion channel 1 (220-280 aa) is suitable for use in Western Blot, Immunohistochemistry, Immunofluorescence, Immunohistochemistry and ELISA research applications.
Applications	WB/IHC/IF/IHC-F/ELISA
Host/Source	Rabbit
Reactivity	Human/Mouse/Rat

PRODUCT PROPERTIES

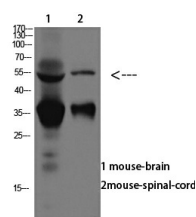
Clonality	Polyclonal
Clone ID	
Concentration	1 mg/mL
Conjugation	Unconjugated
Purification	The antibody was affinity-purified from rabbit antiserum by affinity-chromatography using epitope-specific immunogen.
Dilution	WB 1:500-2000
Range	IHC-P 1:500-200 ELISA 1:10000-20000 IF 1:50-200
Formulation	Liquid in PBS containing 50% Glycerol, 0.5% BSA and 0.02% Sodium Azide.
Isotype	IgG
Storage	Store at -20°C for up to 1 year from the date of receipt, and avoid repeat freeze-thaw cycles.
Instruction	

TARGET INFORMATION

Gene ID	41
Gene Symbol	ASIC1
Uniprot ID	ASIC1_HUMAN
Immunogen	Synthetic peptide from the human protein at the amino acid range 220-280
Immunogen	220-280 aa
Region	
Specificity	The antibody detects endogenous ASIC1
Immunogen	
Sequence	



Immunohistochemical analysis of paraffin-embedded Human-brain, antibody was diluted at 1:100



Western blot analysis of mouse-brain, mouse-spinal-cord lysate, antibody was diluted at 1000. Secondary antibody was diluted at 1:20000

This product is suitable for in-vitro studies under the RESEARCH USE ONLY [RUO] licence. This product must not be used as for diagnostic or other medical purposes.
St John's Laboratory Ltd, Knowledge Dock Business Centre, University Way, London, E16 2RD | Tel: 0208 223 3081