

Anti-Phospho-ATP1A1-Tyr260 antibody (230-290 aa) (STJ98679)

STJ98679

GENERAL INFORMATION

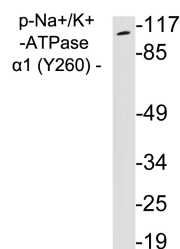
Product Type	Primary antibodies
Short Description	Rabbit polyclonal antibody anti-Phospho-Sodium/potassium-transporting ATPase subunit alpha-1/K+ ATPase alpha-1 subunit-Tyr260 (230-290 aa) is suitable for use in Western Blot, ELISA and Immunohistochemistry research applications.
Applications	WB/ELISA/IHC
Host/Source	Rabbit
Reactivity	Human/Rat/Mouse

PRODUCT PROPERTIES

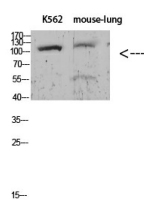
Clonality	Polyclonal
Clone ID	
Concentration	1 mg/mL
Conjugation	Unconjugated
Purification	The antibody was affinity-purified from rabbit antiserum by affinity-chromatography using epitope-specific immunogen.
Dilution	WB 1:500-2000
Range	IHC-P 1:50-300 ELISA 2000-20000
Formulation	Liquid in PBS containing 50% Glycerol, 0.5% BSA and 0.02% Sodium Azide.
Isotype	IgG
Storage	Store at -20°C for up to 1 year from the date of receipt, and avoid repeat freeze-thaw cycles.
Instruction	

TARGET INFORMATION

Gene ID	476
Gene Symbol	ATP1A1
Uniprot ID	AT1A1_HUMAN
Immunogen	Synthetic peptide from the human protein at the amino acid range 230-290
Immunogen Region	230-290 aa
Specificity	The antibody detects endogenous Sodium Potassium ATPase alpha-1 when Phospho occurs at Tyr260)
Immunogen Sequence	



Western blot analysis of lysates from 293 cells treated with PMA, using phospho-Na⁺/K⁺-ATPase Alpha 1 (Phospho-Tyr260) antibody.



Western blot analysis of KB Hela lysate, antibody was diluted at 1000. Secondary antibody was diluted at 1:20000