

## Anti-PPP1R15A antibody (430-490 aa) (STJ98676)

STJ98676

### GENERAL INFORMATION

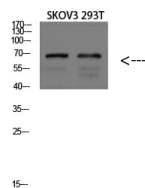
<b>Product Type</b>	Primary antibodies
<b>Short Description</b>	Rabbit polyclonal antibody anti-Protein phosphatase 1 regulatory subunit 15A (430-490 aa) is suitable for use in Western Blot and ELISA research applications.
<b>Applications</b>	WB/ELISA
<b>Host/Source</b>	Rabbit
<b>Reactivity</b>	Human/Rat/Mouse

### PRODUCT PROPERTIES

<b>Clonality</b>	Polyclonal
<b>Clone ID</b>	
<b>Concentration</b>	1 mg/mL
<b>Conjugation</b>	Unconjugated
<b>Purification</b>	The antibody was affinity-purified from rabbit antiserum by affinity-chromatography using epitope-specific immunogen.
<b>Dilution Range</b>	WB 1:500-2000 ELISA 1:10000-20000
<b>Formulation</b>	Liquid in PBS containing 50% Glycerol, 0.5% BSA and 0.02% Sodium Azide.
<b>Isotype</b>	IgG
<b>Storage</b>	Store at -20°C for up to 1 year from the date of receipt, and avoid repeat freeze-thaw cycles.
<b>Instruction</b>	

### TARGET INFORMATION

<b>Gene ID</b>	23645
<b>Gene Symbol</b>	PPP1R15A
<b>Uniprot ID</b>	PR15A_HUMAN
<b>Immunogen</b>	Synthetic peptide from the human protein at the amino acid range 430-490
<b>Immunogen Region</b>	430-490 aa
<b>Specificity</b>	The antibody detects endogenous GADD34
<b>Immunogen Sequence</b>	



Western blot analysis of mouse brain lysate, antibody was diluted at 1000. Secondary antibody was diluted at 1:20000