

Anti-COL17A1 antibody (481-530 aa) (STJ98663)

STJ98663

GENERAL INFORMATION

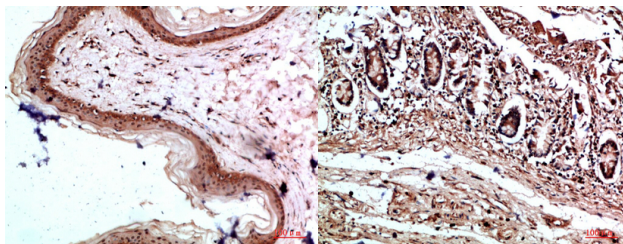
Product Type	Primary antibodies
Short Description	Rabbit polyclonal antibody anti-Collagen alpha-1XVII chain (481-530 aa) is suitable for use in Western Blot, Immunofluorescence and ELISA research applications.
Applications	WB/IF/ELISA
Host/Source	Rabbit
Reactivity	Human/Rat/Mouse

PRODUCT PROPERTIES

Clonality	Polyclonal
Clone ID	
Concentration	1 mg/mL
Conjugation	Unconjugated
Purification	The antibody was affinity-purified from rabbit antiserum by affinity-chromatography using epitope-specific immunogen.
Dilution Range	WB 1:500-2000 IF 1:100-300 ELISA 1:5000-20000
Formulation	Liquid in PBS containing 50% Glycerol, 0.5% BSA and 0.02% Sodium Azide.
Isotype	IgG
Storage Instruction	Store at -20°C for up to 1 year from the date of receipt, and avoid repeat freeze-thaw cycles.

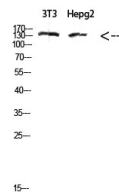
TARGET INFORMATION

Gene ID	1308
Gene Symbol	COL17A1
Uniprot ID	COHA1_HUMAN
Immunogen	The antiserum was produced against synthesized peptide derived from the Internal region of human COL17A1 at the amino acid range 481-530
Immunogen Region	481-530 aa
Specificity	The antibody detects endogenous COL17A1 protein
Immunogen Sequence	



Immunohistochemical analysis of paraffin-embedded human-skin, antibody was diluted at 1:200

Immunohistochemical analysis of paraffin-embedded human-colon, antibody was diluted at 1:200



Western blot analysis of 3T3, hepg2 cells using Antibody diluted at 500. Secondary antibody was diluted at 1:20000