

Anti-C8B antibody (371-420 aa) (STJ98631)

STJ98631

GENERAL INFORMATION

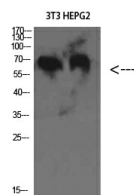
Product Type	Primary antibodies
Short Description	Rabbit polyclonal antibody anti-Complement component C8 beta chain (371-420 aa) is suitable for use in Western Blot and ELISA research applications.
Applications	WB/ELISA
Host/Source	Rabbit
Reactivity	Human/Rat

PRODUCT PROPERTIES

Clonality	Polyclonal
Clone ID	
Concentration	1 mg/mL
Conjugation	Unconjugated
Purification	The antibody was affinity-purified from rabbit antiserum by affinity-chromatography using epitope-specific immunogen.
Dilution Range	WB 1:500-2000 ELISA 1:10000-20000
Formulation	Liquid in PBS containing 50% Glycerol, 0.5% BSA and 0.02% Sodium Azide.
Isotype	IgG
Storage	Store at -20°C for up to 1 year from the date of receipt, and avoid repeat freeze-thaw cycles.
Instruction	

TARGET INFORMATION

Gene ID	732
Gene Symbol	C8B
Uniprot ID	CO8B_HUMAN
Immunogen	The antiserum was produced against synthesized peptide derived from the Internal region of human C8B at the amino acid range 371-420
Immunogen Region	371-420 aa
Specificity	C8 Beta Polyclonal Antibody detects endogenous levels of C8 Beta
Immunogen Sequence	



Western blot analysis of 3T3 HEPG2 cells using C8 Beta Polyclonal Antibody diluted at 1:2000. Secondary antibody was diluted at 1:20000