

Anti-COL28A1 antibody (111-160 aa) (STJ98615)

STJ98615

GENERAL INFORMATION

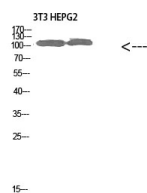
Product Type	Primary antibodies
Short Description	Rabbit polyclonal antibody anti-Collagen alpha-1XXVIII chain (111-160 aa) is suitable for use in Western Blot and ELISA research applications.
Applications	WB/ELISA
Host/Source	Rabbit
Reactivity	Human/Mouse

PRODUCT PROPERTIES

Clonality	Polyclonal
Clone ID	
Concentration	1 mg/mL
Conjugation	Unconjugated
Purification	The antibody was affinity-purified from rabbit antiserum by affinity-chromatography using epitope-specific immunogen.
Dilution Range	WB 1:500-2000 ELISA 1:10000-20000
Formulation	Liquid in PBS containing 50% Glycerol, 0.5% BSA and 0.02% Sodium Azide.
Isotype	IgG
Storage	Store at -20°C for up to 1 year from the date of receipt, and avoid repeat freeze-thaw cycles.
Instruction	

TARGET INFORMATION

Gene ID	340267
Gene Symbol	COL28A1
Uniprot ID	COSA1_HUMAN
Immunogen	The antiserum was produced against synthesized peptide derived from the N-terminal region of human COL28A1 at the amino acid range 111-160
Immunogen Region	111-160 aa
Specificity	Collagen alpha-1 (XXVIII) Polyclonal Antibody detects endogenous levels of Collagen alpha-1 (XXVIII) Polyclonal Antibody
Immunogen Sequence	



Western blot analysis of 3T3 HEPG2 cells using Collagen alpha-1 (XXVIII) Polyclonal Antibody diluted at 1:1000. Secondary antibody was diluted at 1:20000