

Anti-Collagen I antibody (1200-1217 aa) (STJ98600)

STJ98600

GENERAL INFORMATION

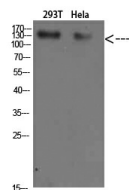
Product Type	Primary antibodies
Short Description	Rabbit polyclonal antibody anti-Collagen alpha-2 (I) chain and Collagen alpha-1 (I) chain (1200-1217 aa) is suitable for use in Western Blot, Immunofluorescence and ELISA research applications.
Applications	WB/IF/ELISA
Host/Source	Rabbit
Reactivity	Human/Mouse/Rat

PRODUCT PROPERTIES

Clonality	Polyclonal
Clone ID	
Concentration	1 mg/mL
Conjugation	Unconjugated
Purification	The antibody was affinity-purified from rabbit antiserum by affinity-chromatography using epitope-specific immunogen.
Dilution Range	WB 1:500-2000 IF 1:100-300 ELISA 1:5000-20000
Formulation	Liquid in PBS containing 50% Glycerol, 0.5% BSA and 0.02% Sodium Azide.
Isotype	IgG
Storage Instruction	Store at -20°C for up to 1 year from the date of receipt, and avoid repeat freeze-thaw cycles.

TARGET INFORMATION

Gene ID	1278 1277
Gene Symbol	COL1A2 COL1A1
Uniprot ID	CO1A2_HUMAN CO1A1_HUMAN
Immunogen	Synthesized peptide derived from Collagen I at the amino acid range 1200-1217
Immunogen Region	1200-1217 aa
Specificity	Collagen I Polyclonal Antibody detects endogenous levels of Collagen I
Immunogen Sequence	



Western blot analysis of 293T HeLa cells using Collagen I Polyclonal Antibody diluted at 1:500. Secondary antibody was diluted at 1:20000