

Anti-COL4A1 antibody (1428-1443 aa) (STJ98599)

STJ98599

GENERAL INFORMATION

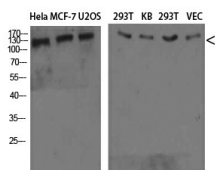
Product Type	Primary antibodies
Short Description	Rabbit polyclonal antibody anti-Collagen alpha-1IV chain (1428-1443 aa) is suitable for use in Western Blot and ELISA research applications.
Applications	WB/ELISA
Host/Source	Rabbit
Reactivity	Human/Mouse/Rat

PRODUCT PROPERTIES

Clonality	Polyclonal
Clone ID	
Concentration	1 mg/mL
Conjugation	Unconjugated
Purification	The antibody was affinity-purified from rabbit antiserum by affinity-chromatography using epitope-specific immunogen.
Dilution Range	WB 1:500-2000 ELISA 1:10000-20000
Formulation	Liquid in PBS containing 50% Glycerol, 0.5% BSA and 0.02% Sodium Azide.
Isotype	IgG
Storage Instruction	Store at -20°C for up to 1 year from the date of receipt, and avoid repeat freeze-thaw cycles.

TARGET INFORMATION

Gene ID	1282
Gene Symbol	COL4A1
Uniprot ID	CO4A1_HUMAN
Immunogen	Synthesized peptide derived from Collagen IV at the amino acid range 1428-1443
Immunogen Region	1428-1443 aa
Specificity	Collagen IV Polyclonal Antibody detects endogenous levels of Collagen IV
Immunogen Sequence	



Western blot analysis of HeLa MCF-7 U2OS 293T KB 293T VEC cells using Collagen IV Polyclonal Antibody diluted at 1:800. Secondary antibody was diluted at 1:20000

This product is suitable for in-vitro studies under the RESEARCH USE ONLY [RUO] licence. This product must not be used as for diagnostic or other medical purposes.
St John's Laboratory Ltd, Knowledge Dock Business Centre, University Way, London, E16 2RD | Tel: 0208 223 3081