

Anti-PTEN antibody (251-300 aa) (STJ98583)

STJ98583

GENERAL INFORMATION

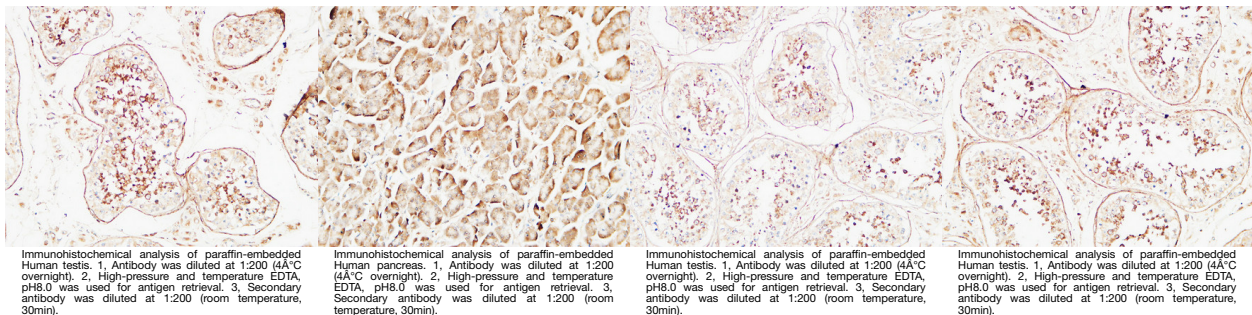
Product Type	Primary antibodies
Short Description	Rabbit polyclonal antibody anti-Phosphatidylinositol 3, 4, 5-trisphosphate 3-phosphatase and dual-specificity protein phosphatase
Applications	PTEN (251-300 aa) is suitable for use in Immunofluorescence, Western Blot, Immunohistochemistry and ELISA research appli
Host/Source	IF/WB/IHC/ELISA
Reactivity	Rabbit
	Human/Mouse/Rat

PRODUCT PROPERTIES

Clonality	Polyclonal
Clone ID	
Concentration	1 mg/mL
Conjugation	Unconjugated
Purification	The antibody was affinity-purified from rabbit antiserum by affinity-chromatography using epitope-specific immunogen.
Dilution	IF 1:50-200
Range	IHC-P 100-300 WB 1:500-2000 ELISA 1:10000-20000
Formulation	Liquid in PBS containing 50% Glycerol, 0.5% BSA and 0.02% Sodium Azide.
Isotype	IgG
Storage Instruction	Store at -20°C for up to 1 year from the date of receipt, and avoid repeat freeze-thaw cycles.

TARGET INFORMATION

Gene ID	5728
Gene Symbol	PTEN
Uniprot ID	PTEN_HUMAN
Immunogen	Synthesized peptide derived from PTEN at the amino acid range 251-300
Immunogen	251-300 aa
Region	
Specificity	PTEN Polyclonal Antibody detects endogenous levels of PTEN
Immunogen Sequence	



This product is suitable for in-vitro studies under the RESEARCH USE ONLY [RUO] licence. This product must not be used as for diagnostic or other medical purposes.
St John's Laboratory Ltd, Knowledge Dock Business Centre, University Way, London, E16 2RD | Tel: 0208 223 3081