

Anti-BMP10 antibody (361-410 aa) (STJ98581)

STJ98581

GENERAL INFORMATION

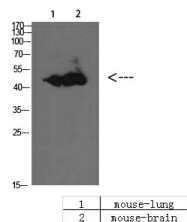
Product Type	Primary antibodies
Short Description	Rabbit polyclonal antibody anti-Bone morphogenetic protein 10 (361-410 aa) is suitable for use in Western Blot and ELISA research applications.
Applications	WB/ELISA
Host/Source	Rabbit
Reactivity	Human/Mouse/Rat

PRODUCT PROPERTIES

Clonality	Polyclonal
Clone ID	
Concentration	1 mg/mL
Conjugation	Unconjugated
Purification	The antibody was affinity-purified from rabbit antiserum by affinity-chromatography using epitope-specific immunogen.
Dilution Range	WB 1:500-2000 ELISA 1:10000-20000
Formulation	Liquid in PBS containing 50% Glycerol, 0.5% BSA and 0.02% Sodium Azide.
Isotype	IgG
Storage Instruction	Store at -20°C for up to 1 year from the date of receipt, and avoid repeat freeze-thaw cycles.

TARGET INFORMATION

Gene ID	27302
Gene Symbol	BMP10
Uniprot ID	BMP10_HUMAN
Immunogen	Synthesized peptide derived from BMP-10 at the amino acid range 361-410
Immunogen	361-410 aa
Region	
Specificity	BMP-10 Polyclonal Antibody detects endogenous levels of BMP-10
Immunogen	
Sequence	



Western blot analysis of mouse-brain mouse-lung cells using BMP-10 Polyclonal Antibody diluted at 1:1000. Secondary antibody was diluted at 1:20000.

This product is suitable for in-vitro studies under the RESEARCH USE ONLY [RUO] licence. This product must not be used as for diagnostic or other medical purposes.
St John's Laboratory Ltd, Knowledge Dock Business Centre, University Way, London, E16 2RD | Tel: 0208 223 3081