

Anti-Phospho-VIM-Tyr38 antibody (STJ98572)

STJ98572

GENERAL INFORMATION

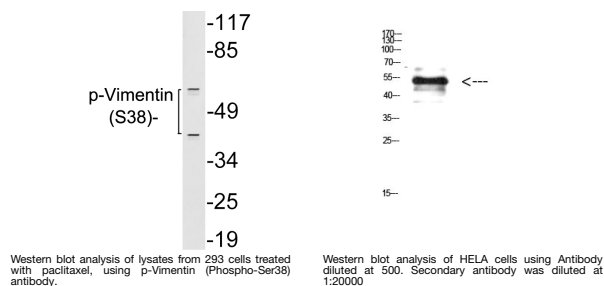
Product Type	Primary antibodies
Short Description	Rabbit polyclonal antibody anti-Phospho-Vimentin-Tyr38 is suitable for use in Western Blot and ELISA research applications.
Applications	WB/ELISA
Host/Source	Rabbit
Reactivity	Human/Mouse/Rat

PRODUCT PROPERTIES

Clonality	Polyclonal
Clone ID	
Concentration	1 mg/mL
Conjugation	Unconjugated
Purification	The antibody was affinity-purified from rabbit serum by affinity-chromatography using specific immunogen.
Dilution Range	WB 1:500-10000 ELISA 1:10000
Formulation	Liquid in PBS pH7.4, 0.02% Sodium Azide and 50% Glycerol.
Isotype	IgG
Storage Instruction	Store at -20°C for up to 1 year from the date of receipt, and avoid repeat freeze-thaw cycles.

TARGET INFORMATION

Gene ID	7431
Gene Symbol	VIM
Uniprot ID	VIME_HUMAN
Immunogen	Synthesized phospho-peptide around the phosphorylation site of human Vimentin (Phospho-Tyr38)
Immunogen Region	
Specificity	This antibody detects endogenous levels of Vimentin at Human:Y38;Mouse:Y38;Rat:Y38, It doesn't react with total protein.
Immunogen Sequence	



This product is suitable for in-vitro studies under the RESEARCH USE ONLY [RUO] licence. This product must not be used as for diagnostic or other medical purposes.
St John's Laboratory Ltd, Knowledge Dock Business Centre, University Way, London, E16 2RD | Tel: 0208 223 3081