

## Anti-Phospho-MER/TYRO3-Tyr753/Tyr685 antibody (STJ98571)

STJ98571

### GENERAL INFORMATION

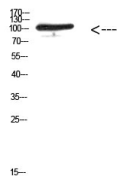
<b>Product Type</b>	Primary antibodies
<b>Short Description</b>	Rabbit polyclonal antibody anti-Phospho-Tyrosine-protein kinase Mer and Tyrosine-protein kinase receptor TYRO3-Tyr753/Tyr685 is suitable for use in Western Blot, ELISA and Immunohistochemistry research applications.
<b>Applications</b>	WB/ELISA/IHC
<b>Host/Source</b>	Rabbit
<b>Reactivity</b>	Human/Mouse/Rat

### PRODUCT PROPERTIES

<b>Clonality</b>	Polyclonal
<b>Clone ID</b>	
<b>Concentration</b>	1 mg/mL
<b>Conjugation</b>	Unconjugated
<b>Purification</b>	The antibody was affinity-purified from rabbit serum by affinity-chromatography using specific immunogen.
<b>Dilution</b>	WB 1:500-2000
<b>Range</b>	IHC-P 1:50-300 ELISA 2000-20000
<b>Formulation</b>	Liquid in PBS pH7.4, 0.02% Sodium Azide and 50% Glycerol.
<b>Isotype</b>	IgG
<b>Storage Instruction</b>	Store at -20°C for up to 1 year from the date of receipt, and avoid repeat freeze-thaw cycles.

### TARGET INFORMATION

<b>Gene ID</b>	<a href="#">10461</a> <a href="#">7301</a>
<b>Gene Symbol</b>	<a href="#">MERTK</a> <a href="#">TYRO3</a>
<b>Uniprot ID</b>	<a href="#">MERTK_HUMAN</a> <a href="#">TYRO3_HUMAN</a>
<b>Immunogen</b>	Synthesized phospho-peptide around the phosphorylation site of human MER/TYRO3 (Phospho-Tyr753/Tyr685)
<b>Immunogen Region</b>	
<b>Specificity</b>	This antibody detects endogenous levels of MER/TYRO3 at Human:Y753/Y685;Mouse:Y748/Y675;Rat:Y748/Y675, It doesn't react with total protein.
<b>Immunogen Sequence</b>	



Western blot analysis of 293T cells using Antibody diluted at 500. Secondary antibody was diluted at 1:20000

This product is suitable for in-vitro studies under the RESEARCH USE ONLY [RUO] licence. This product must not be used as for diagnostic or other medical purposes.  
St John's Laboratory Ltd, Knowledge Dock Business Centre, University Way, London, E16 2RD | Tel: 0208 223 3081