

## Anti-TRIM28 antibody (C-Term) (STJ98563)

STJ98563

### GENERAL INFORMATION

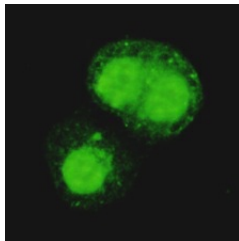
<b>Product Type</b>	Primary antibodies
<b>Short Description</b>	Mouse monoclonal antibody anti-Transcription intermediary factor 1-beta (C-Term) is suitable for use in Western Blot and Immunofluorescence research applications.
<b>Applications</b>	WB/IF
<b>Host/Source</b>	Mouse
<b>Reactivity</b>	Human/Mouse/Rat/Dog/Rabbit

### PRODUCT PROPERTIES

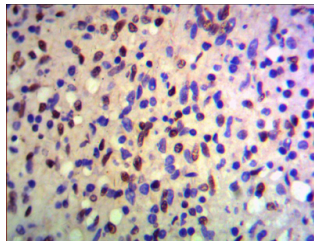
<b>Clonality</b>	Monoclonal
<b>Clone ID</b>	
<b>Concentration</b>	1 mg/mL
<b>Conjugation</b>	Unconjugated
<b>Purification</b>	Affinity purification
<b>Dilution Range</b>	WB 1:1000-1:2000 IF 1:50-200
<b>Formulation</b>	Liquid in 0.1M Tris-Glycine (pH7.4, 150 mM NaCl) , 0.2% Sodium Azide and 50% Glycerol.
<b>Isotype</b>	
<b>Storage Instruction</b>	Store at -20°C for up to 1 year from the date of receipt, and avoid repeat freeze-thaw cycles.

### TARGET INFORMATION

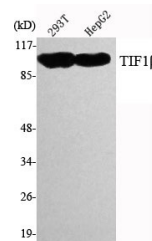
<b>Gene ID</b>	10155
<b>Gene Symbol</b>	TRIM28
<b>Uniprot ID</b>	TIF1B_HUMAN
<b>Immunogen</b>	Purified recombinant human TIF1 Beta (C-terminus) protein fragments expressed in E.coli.
<b>Immunogen Region</b>	C-Term
<b>Specificity</b>	TIF1 Beta Monoclonal Antibody detects endogenous levels of TIF1 Beta protein.
<b>Immunogen Sequence</b>	



Immunocytochemistry staining of HeLa cells fixed with 4% Paraformaldehyde and using anti-KAP1/TIF1 beta mouse mAb (dilution 1:100).



IHC of paraffin-embedded human Spleen using anti-KAP1/TIF1 beta diluted 1/500-1/1000.



Western blot analysis using TIF1 Beta monoclonal antibody against 293T, HepG2 cell lysate.

This product is suitable for in-vitro studies under the RESEARCH USE ONLY [RUO] licence. This product must not be used as for diagnostic or other medical purposes.  
St John's Laboratory Ltd, Knowledge Dock Business Centre, University Way, London, E16 2RD | Tel: 0208 223 3081