

Anti-KDM5C antibody (C-Term) (STJ98552)

STJ98552

GENERAL INFORMATION

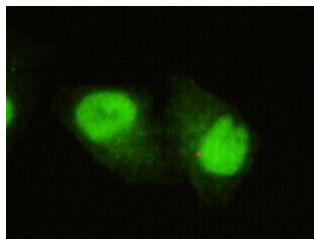
| | |
|--------------------------|---|
| Product Type | Primary antibodies |
| Short Description | Mouse monoclonal antibody anti-Lysine-specific demethylase 5C demethylase 5C (C-Term) is suitable for use in Western Blot and Immunofluorescence research applications. |
| Applications | WB/IF |
| Host/Source | Mouse |
| Reactivity | Human/Mouse/Rat/Cow/Dog |

PRODUCT PROPERTIES

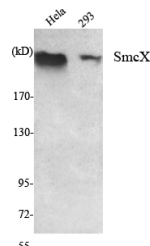
| | |
|-----------------------|--|
| Clonality | Monoclonal |
| Clone ID | |
| Concentration | 1 mg/mL |
| Conjugation | Unconjugated |
| Purification | Affinity purification |
| Dilution Range | WB 1:1000-1:2000 IF 1:100-1:500 |
| Formulation | Liquid in 0.1M Tris-Glycine (pH7.4, 150 mM NaCl) , 0.2% Sodium Azide and 50% Glycerol. |
| Isotype | |
| Storage | Store at -20°C for up to 1 year from the date of receipt, and avoid repeat freeze-thaw cycles. |
| Instruction | |

TARGET INFORMATION

| | |
|---------------------------|---|
| Gene ID | 8242 |
| Gene Symbol | KDM5C |
| Uniprot ID | KDM5C_HUMAN |
| Immunogen | Purified recombinant human SmcX (C-terminus) protein fragments expressed in E.coli. |
| Immunogen Region | C-Term |
| Specificity | SmcX Monoclonal Antibody detects endogenous levels of SmcX protein. |
| Immunogen Sequence | |



Immunofluorescence analysis of HeLa cells using SmcX monoclonal antibody.



Western blot analysis using SmcX monoclonal antibody against HeLa, 293 cell lysate.

This product is suitable for in-vitro studies under the RESEARCH USE ONLY [RUO] licence. This product must not be used as for diagnostic or other medical purposes.
St John's Laboratory Ltd, Knowledge Dock Business Centre, University Way, London, E16 2RD | Tel: 0208 223 3081