

Anti-SMC1A antibody (N-Term) (STJ98551)

STJ98551

GENERAL INFORMATION

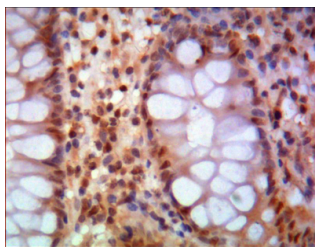
Product Type	Primary antibodies
Short Description	Mouse monoclonal antibody anti-Structural maintenance of chromosomes protein 1A (N-Term) is suitable for use in Western Blot, Immunohistochemistry, Immunofluorescence and Flow Cytometry research applications.
Applications	WB/IHC/IF/FC
Host/Source	Mouse
Reactivity	Human/Mouse/Rat/Pig

PRODUCT PROPERTIES

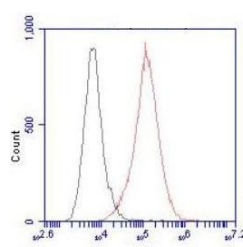
Clonality	Monoclonal
Clone ID	
Concentration	1 mg/mL
Conjugation	Unconjugated
Purification	Affinity purification
Dilution	WB 1:1000-1:2000
Range	IHC 1:500-1:1000 FC 1:100-1:200 IF 1:50-200
Formulation	Liquid in 0.1M Tris-Glycine (pH7.4, 150 mM NaCl) , 0.2% Sodium Azide and 50% Glycerol.
Isotype	
Storage	Store at -20°C for up to 1 year from the date of receipt, and avoid repeat freeze-thaw cycles.
Instruction	

TARGET INFORMATION

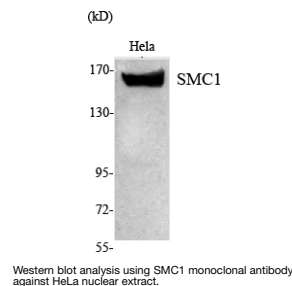
Gene ID	8243
Gene Symbol	SMC1A
Uniprot ID	SMC1A_HUMAN
Immunogen	Purified recombinant human SMC1 (N-terminus) protein fragments expressed in E.coli.
Immunogen Region	N-Term
Specificity	SMC1 Monoclonal Antibody detects endogenous levels of SMC1 protein.
Immunogen Sequence	



Immunohistochemistry analysis of paraffin-embedded human colon using SMC1 monoclonal antibody.



Flow cytometric analysis of HeLa cells stained with SMC1 monoclonal antibody (red), followed by FITC-conjugated goat anti-mouse IgG. Black line histogram represents the isotype control, normal mouse IgG.



Western blot analysis using SMC1 monoclonal antibody against HeLa nuclear extract.