

## Anti-PPP4C antibody (STJ98539)

STJ98539

### GENERAL INFORMATION

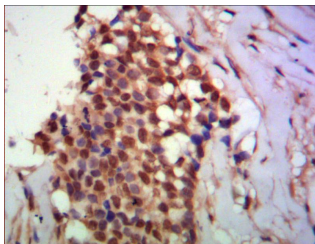
<b>Product Type</b>	Primary antibodies
<b>Short Description</b>	Mouse monoclonal antibody anti-Serine/threonine-protein phosphatase 4 catalytic subunit is suitable for use in Western Blot, Immunohistochemistry and Immunofluorescence research applications.
<b>Applications</b>	WB/IHC/IF
<b>Host/Source</b>	Mouse
<b>Reactivity</b>	Human/Mouse/Rat/Cow/Dog/Zebrafish

### PRODUCT PROPERTIES

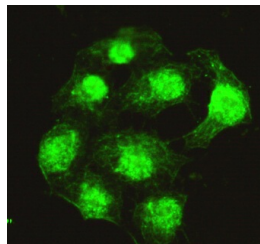
<b>Clonality</b>	Monoclonal
<b>Clone ID</b>	
<b>Concentration</b>	1 mg/mL
<b>Conjugation</b>	Unconjugated
<b>Purification</b>	Affinity purification
<b>Dilution Range</b>	WB 1:1000-1:2000 IHC 1:500-1:1000 IF 1:100-1:500
<b>Formulation</b>	Liquid in 0.1M Tris-Glycine (pH7.4, 150 mM NaCl) , 0.2% Sodium Azide and 50% Glycerol.
<b>Isotype</b>	
<b>Storage Instruction</b>	Store at -20°C for up to 1 year from the date of receipt, and avoid repeat freeze-thaw cycles.

### TARGET INFORMATION

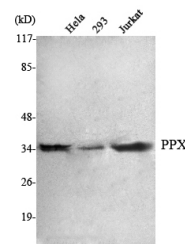
<b>Gene ID</b>	5531
<b>Gene Symbol</b>	PPP4C
<b>Uniprot ID</b>	PP4C_HUMAN
<b>Immunogen</b>	Purified recombinant human PPX protein fragments expressed in E.coli.
<b>Immunogen Region</b>	
<b>Specificity</b>	PPX Monoclonal Antibody detects endogenous levels of PPX protein.
<b>Immunogen Sequence</b>	



Immunohistochemistry analysis of paraffin-embedded human breast cancer using PPX monoclonal antibody.



Immunofluorescence analysis of HeLa cells using PPX monoclonal antibody.



Western blot analysis using PPX monoclonal antibody against HeLa, 293, Jurkat cell lysate.

This product is suitable for in-vitro studies under the RESEARCH USE ONLY [RUO] licence. This product must not be used as for diagnostic or other medical purposes.  
St John's Laboratory Ltd, Knowledge Dock Business Centre, University Way, London, E16 2RD | Tel: 0208 223 3081