

Anti-PPP3CA antibody (STJ98536)

STJ98536

GENERAL INFORMATION

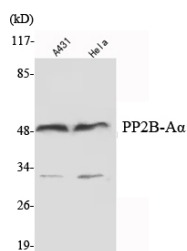
Product Type	Primary antibodies
Short Description	Mouse monoclonal antibody anti-Protein phosphatase 3 catalytic subunit alpha is suitable for use in Western Blot research applications.
Applications	WB
Host/Source	Mouse
Reactivity	Human/Mouse/Rat

PRODUCT PROPERTIES

Clonality	Monoclonal
Clone ID	
Concentration	1 mg/mL
Conjugation	Unconjugated
Purification	Affinity purification
Dilution Range	WB 1:1000-1:2000
Formulation	Liquid in 0.1M Tris-Glycine (pH7.4, 150 mM NaCl) , 0.2% Sodium Azide and 50% Glycerol.
Isotype	
Storage Instruction	Store at -20°C for up to 1 year from the date of receipt, and avoid repeat freeze-thaw cycles.

TARGET INFORMATION

Gene ID	5530
Gene Symbol	PPP3CA
Uniprot ID	PP2BA_HUMAN
Immunogen	Purified recombinant human PP2B-A Alpha protein fragments expressed in E.coli.
Immunogen Region	
Specificity	PP2B-A Alpha Monoclonal Antibody detects endogenous levels of PP2B-A Alpha protein.
Immunogen Sequence	



Western blot analysis using PP2B-A Alpha monoclonal antibody against A431, HeLa cell lysate.

This product is suitable for in-vitro studies under the RESEARCH USE ONLY [RUO] licence. This product must not be used as for diagnostic or other medical purposes.
St John's Laboratory Ltd, Knowledge Dock Business Centre, University Way, London, E16 2RD | Tel: 0208 223 3081