

Anti-PPP2CA antibody (N-Term) (STJ98535)

STJ98535

GENERAL INFORMATION

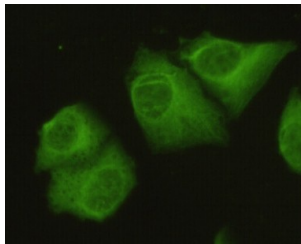
Product Type	Primary antibodies
Short Description	Mouse monoclonal antibody anti-Serine/threonine-protein phosphatase 2A catalytic subunit alpha isoform (N-Term) is suitable for use in Western Blot and Immunofluorescence research applications.
Applications	WB/IF
Host/Source	Mouse
Reactivity	Human/Mouse/Cow/Chicken/Dog/Pig/Rabbit/Zebrafish

PRODUCT PROPERTIES

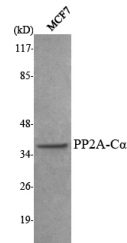
Clonality	Monoclonal
Clone ID	
Concentration	1 mg/mL
Conjugation	Unconjugated
Purification	Affinity purification
Dilution	WB 1:1000-1:2000
Range	IF 1:100-1:500
Formulation	Liquid in 0.1M Tris-Glycine (pH7.4, 150 mM NaCl) , 0.2% Sodium Azide and 50% Glycerol.
Isotype	
Storage	Store at -20°C for up to 1 year from the date of receipt, and avoid repeat freeze-thaw cycles.
Instruction	

TARGET INFORMATION

Gene ID	5515
Gene Symbol	PPP2CA
Uniprot ID	PP2AA_HUMAN
Immunogen	Purified recombinant human PP2A-C Alpha (N-terminus) protein fragments expressed in E.coli.
Immunogen Region	N-Term
Specificity	PP2A-C Alpha Monoclonal Antibody detects endogenous levels of PP2A-C Alpha protein.
Immunogen Sequence	



Immunofluorescence analysis of HeLa cells using PP2A-C Alpha monoclonal antibody.



Western blot analysis using PP2A-C Alpha monoclonal antibody against MCF7 cell lysate.

This product is suitable for in-vitro studies under the RESEARCH USE ONLY [RUO] licence. This product must not be used as for diagnostic or other medical purposes.
St John's Laboratory Ltd, Knowledge Dock Business Centre, University Way, London, E16 2RD | Tel: 0208 223 3081