

Anti-PPP1CA antibody (N-Term) (STJ98533)

STJ98533

GENERAL INFORMATION

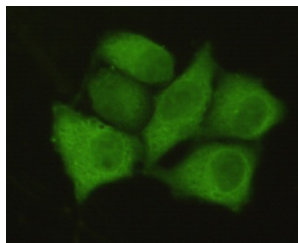
Product Type	Primary antibodies
Short Description	Mouse monoclonal antibody anti-Serine/threonine-protein phosphatase PP1-alpha catalytic subunit (N-Term) is suitable for use in Western Blot and Immunofluorescence research applications.
Applications	WB/IF
Host/Source	Mouse
Reactivity	Human/Mouse/Rat/Cow/Chicken/Pig/Rabbit/Zebrafish

PRODUCT PROPERTIES

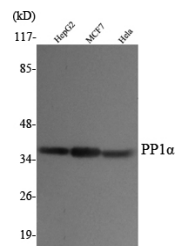
Clonality	Monoclonal
Clone ID	
Concentration	1 mg/mL
Conjugation	Unconjugated
Purification	Affinity purification
Dilution Range	WB 1:1000-1:2000 IF 1:100-1:500
Formulation	Liquid in 0.1M Tris-Glycine (pH7.4, 150 mM NaCl) , 0.2% Sodium Azide and 50% Glycerol.
Isotype	
Storage Instruction	Store at -20°C for up to 1 year from the date of receipt, and avoid repeat freeze-thaw cycles.

TARGET INFORMATION

Gene ID	5499
Gene Symbol	PPP1CA
Uniprot ID	PP1A_HUMAN
Immunogen	Purified recombinant human PP1 Alpha (N-terminus) protein fragments expressed in E.coli.
Immunogen Region	N-Term
Specificity	PP1 Alpha Monoclonal Antibody detects endogenous levels of PP1 Alpha protein.
Immunogen Sequence	



Immunofluorescence analysis of HeLa cells using PP1 Alpha monoclonal antibody.



Western blot analysis using PP1 Alpha monoclonal antibody against HepG2, MCF7, HeLa cell lysate.

This product is suitable for in-vitro studies under the RESEARCH USE ONLY [RUO] licence. This product must not be used as for diagnostic or other medical purposes.
St John's Laboratory Ltd, Knowledge Dock Business Centre, University Way, London, E16 2RD | Tel: 0208 223 3081