

Anti-LRRFIP1 antibody (STJ98513)

STJ98513

GENERAL INFORMATION

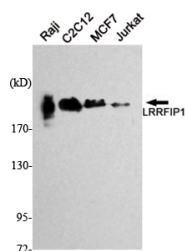
Product Type	Primary antibodies
Short Description	Mouse monoclonal antibody anti-Leucine-rich repeat flightless-interacting protein 1 is suitable for use in Western Blot research applications.
Applications	WB
Host/Source	Mouse
Reactivity	Human

PRODUCT PROPERTIES

Clonality	Monoclonal
Clone ID	
Concentration	1 mg/mL
Conjugation	Unconjugated
Purification	Affinity purification
Dilution Range	WB 1:1000-1:2000
Formulation	Liquid in 0.1M Tris-Glycine (pH7.4, 150 mM NaCl) , 0.2% Sodium Azide and 50% Glycerol.
Isotype	
Storage Instruction	Store at -20°C for up to 1 year from the date of receipt, and avoid repeat freeze-thaw cycles.

TARGET INFORMATION

Gene ID	9208
Gene Symbol	LRRFIP1
Uniprot ID	LRRF1_HUMAN
Immunogen	Purified recombinant human LRRFIP1 protein fragments expressed in E.coli.
Immunogen Region	
Specificity	LRRFIP1 Monoclonal Antibody detects endogenous levels of LRRFIP1 protein.
Immunogen Sequence	



Western blot analysis using LRRFIP1 monoclonal antibody against Raji, C2C12, MCF7, Jurkat cell lysate.

This product is suitable for in-vitro studies under the RESEARCH USE ONLY [RUO] licence. This product must not be used as for diagnostic or other medical purposes.
St John's Laboratory Ltd, Knowledge Dock Business Centre, University Way, London, E16 2RD | Tel: 0208 223 3081