

## Anti-ACLY antibody (STJ98469)

STJ98469

### GENERAL INFORMATION

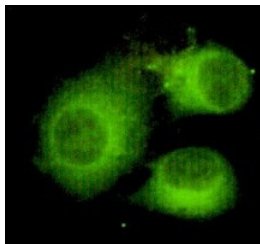
<b>Product Type</b>	Primary antibodies
<b>Short Description</b>	Mouse monoclonal antibody anti-ATP-citrate synthase-lyase is suitable for use in Western Blot, Immunofluorescence and Flow Cytometry research applications.
<b>Applications</b>	WB/IF/FC
<b>Host/Source</b>	Mouse
<b>Reactivity</b>	Human/Mouse/Rat/Cow/Chicken/Pig/Sheep

### PRODUCT PROPERTIES

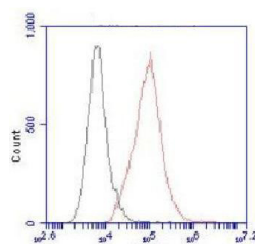
<b>Clonality</b>	Monoclonal
<b>Clone ID</b>	
<b>Concentration</b>	1 mg/mL
<b>Conjugation</b>	Unconjugated
<b>Purification</b>	Affinity purification
<b>Dilution Range</b>	WB 1:1000-1:2000 IF 1:100-1:500 FC 1:100-1:200
<b>Formulation</b>	Liquid in 0.1M Tris-Glycine (pH7.4, 150 mM NaCl) , 0.2% Sodium Azide and 50% Glycerol.
<b>Isotype</b>	
<b>Storage Instruction</b>	Store at -20°C for up to 1 year from the date of receipt, and avoid repeat freeze-thaw cycles.

### TARGET INFORMATION

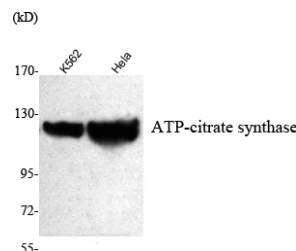
<b>Gene ID</b>	47
<b>Gene Symbol</b>	ACLY
<b>Uniprot ID</b>	ACLY_HUMAN
<b>Immunogen</b>	Purified recombinant human ATP-citrate synthase (C-terminus) protein fragments expressed in E.coli.
<b>Immunogen Region</b>	
<b>Specificity</b>	ATP-citrate synthase Monoclonal Antibody detects endogenous levels of ATP-citrate synthase protein.
<b>Immunogen Sequence</b>	



Immunofluorescence analysis of HeLa cells using ATP-citrate synthase monoclonal antibody.



Flow cytometric analysis of HeLa cells stained with ATP-citrate synthase monoclonal antibody (red) followed by FITC-conjugated goat anti-mouse IgG. Black line histogram represents the isotype control, normal mouse IgG.



Western blot analysis using ATP-citrate synthase monoclonal antibody against K562, HeLa cell lysate.

This product is suitable for in-vitro studies under the RESEARCH USE ONLY [RUO] licence. This product must not be used as for diagnostic or other medical purposes.  
St John's Laboratory Ltd, Knowledge Dock Business Centre, University Way, London, E16 2RD | Tel: 0208 223 3081