

Anti-WIF1 antibody [1G5] (STJ98450)

STJ98450

GENERAL INFORMATION

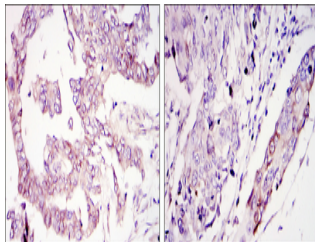
Product Type	Primary antibodies
Short Description	Mouse monoclonal antibody anti-Wnt inhibitory factor 1 is suitable for use in Western Blot, Immunohistochemistry, Immunofluorescence and ELISA research applications.
Applications	WB/IHC/IF/ELISA
Host/Source	Mouse
Reactivity	Human

PRODUCT PROPERTIES

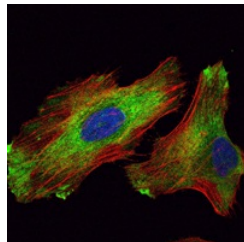
Clonality	Monoclonal
Clone ID	1G5
Concentration	
Conjugation	Unconjugated
Purification	Affinity purification
Dilution Range	WB 1:500-1:2000 IHC 1:200-1:1000 IF 1:200-1:1000 ELISA 1:10000
Formulation	Liquid in PBS containing 0.03% Sodium Azide, 0.5% BSA, 50% Glycerol.
Isotype	IgG1
Storage Instruction	Store at -20°C for up to 1 year from the date of receipt, and avoid repeat freeze-thaw cycles.

TARGET INFORMATION

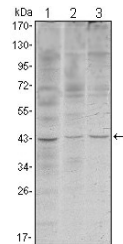
Gene ID	11197
Gene Symbol	WIF1
Uniprot ID	WIF1_HUMAN
Immunogen	Purified recombinant fragment of human WIF-1 expressed in E. Coli.
Immunogen Region	
Specificity	WIF-1 Monoclonal Antibody detects endogenous levels of WIF-1 protein.
Immunogen Sequence	



Immunohistochemistry analysis of paraffin-embedded ovary tumour tissues (left) and lung cancer (right) with DAB staining using WIF-1 monoclonal antibody.



Immunofluorescence analysis of HeLa cells using WIF-1 monoclonal antibody (green). Red: Actin filaments have been labeled with Alexa Fluor-555 phalloidin.



Western blot analysis using WIF-1 monoclonal antibody against HeLa (1), NIH/3T3 (2) and NTERA-2 (3) cell lysate.