

Anti-TUBB3 antibody [2E9] (STJ98436)

STJ98436

GENERAL INFORMATION

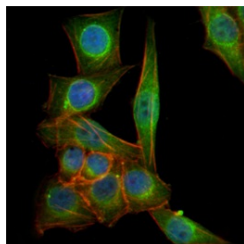
Product Type	Primary antibodies
Short Description	Mouse monoclonal antibody anti-Tubulin beta-3 chain is suitable for use in Western Blot, Immunofluorescence, Flow Cytometry and ELISA research applications.
Applications	WB/IF/FC/ELISA
Host/Source	Mouse
Reactivity	Human

PRODUCT PROPERTIES

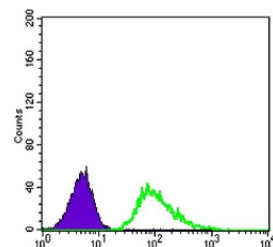
Clonality	Monoclonal
Clone ID	2E9
Concentration	
Conjugation	Unconjugated
Purification	Affinity purification
Dilution Range	WB 1:500-1:2000 IF 1:200-1:1000 FC 1:200-1:400 ELISA 1:10000
Formulation	Liquid in PBS containing 0.03% Sodium Azide, 0.5% BSA, 50% Glycerol.
Isotype	IgG1
Storage Instruction	Store at -20°C for up to 1 year from the date of receipt, and avoid repeat freeze-thaw cycles.

TARGET INFORMATION

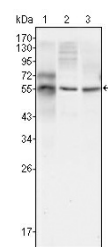
Gene ID	10381
Gene Symbol	TUBB3
Uniprot ID	TBB3_HUMAN
Immunogen	Purified recombinant fragment of human Tubulin Beta expressed in E. Coli.
Immunogen Region	
Specificity	Tubulin Beta Monoclonal Antibody detects endogenous levels of Tubulin Beta protein.
Immunogen Sequence	



Immunofluorescence analysis of PANC-1 cells using Tubulin Beta monoclonal antibody (green). Blue: DRAQ5 fluorescent DNA dye. Red: Actin filaments have been labeled with Alexa Fluor-555 phalloidin.



Flow cytometric analysis of A549 cells using Tubulin Beta monoclonal antibody (green) and negative control (purple).



Western blot analysis using Tubulin Beta monoclonal antibody against HepG2 (1), A549 (2) and HeLa (3) cell lysate.

This product is suitable for in-vitro studies under the RESEARCH USE ONLY [RUO] licence. This product must not be used as for diagnostic or other medical purposes.
St John's Laboratory Ltd, Knowledge Dock Business Centre, University Way, London, E16 2RD | Tel: 0208 223 3081